

2002 International  
**BRIDGE**  
Conference™



**VITAL LINKS IN  
SECURING OUR  
MOBILITY**

**June 10-12, 2002**

# TABLE OF CONTENTS

Attendee Information .....	4-6
Bridge Awards Luncheon .....	7
Executive Committee .....	1
Exhibit Hall Map .....	Inside Back Cover
Exhibitors Directory .....	45-72
Featured State Session: Utah .....	8-10
IBC Bridge Awards: Historical Perspective .....	3-4
Keynote Session .....	7
Pittsburgh Bridge Tour .....	19
Schedule at a Glance .....	36-37
Sunday Night Activities .....	6-7
<b>Seminars</b>	
Advanced Composite Materials — Theory, Design and Practice for Use on Bridges .....	28
High Performance Steel Bridges .....	39
Mainstream Design: Using LRFD to Design Steel Bridges .....	19
Wind Engineering for Bridges .....	39
<b>Special Interest Sessions</b>	
3-D Live Loading for AASHTO LRFD Made Easy .....	30
Automated LRFD Cast-In-Place Concrete Post-Tensioned Box Girder Design .....	29
Coatings .....	20 & 29
FRP Composites for Bridge Construction .....	40
Innovative Systems for Repair, Protection, Strengthening and Monitoring in Bridge Design and Construction .....	20
Precast/Prestressed Spliced- Girder Bridges .....	14
Use of Prefabricated Bridge Elements and Systems .....	40
<b>Technical Sessions</b>	
AASHTO Task Force Report .....	21
Construction .....	31-33
Design, Part 1 .....	15-16
Design, Part 2 .....	22-24
Innovative Design .....	34-35, 38
Long Span Bridges .....	41-42
Movable .....	43-44
Proprietary .....	11-13
Rehabilitation & Strengthening .....	25-27
Segmental .....	17-18

# EXECUTIVE COMMITTEE

**Donald W. Herbert, PE**

Pennsylvania Department of Transportation

*General Chair*

**Michael J. Alterio**

Alpha Structures, Inc.

**Carl Angeloff, PE**

Bayer Corporation

*Awards Chair*

**Victor Bertolina, PE**

SAI Consulting Engineers

*Budget Chair*

**Enrico T. Bruschi, PE**

DMJM+Harris, Inc.

*Exhibits Chair*

**Scott Christie, PE**

Pennsylvania Department  
of Transportation

**Richard Connors, PE, PMP**

Consultant

*Rules Chair*

**James D. Cooper, PE**

Federal Highway

Administration

*Co-Sponsors Chair*

**Robert DiCicco, PE**

City of Pittsburgh

**James Dwyer**

Port Authority of

Allegheny County

*Tour Chair*

**Christopher J. Earls, PhD**

University of Pittsburgh

**Gary L. Graham, PE**

Pennsylvania Turnpike

Commission

**John F. Graham, Jr., PE**

Graham Consulting Inc.

**Arthur W. Hedgren, Jr., PhD, PE**

Consultant

**Donald Killmeyer, Jr., PE**

County of Allegheny,

Department of Public Works

**Eric Kline**

KTA-Tator, Inc.

*Keynote & Special Interest*

*Session Chair*

**Thomas Leech, PE**

Gannett Fleming, Inc.

*Seminars Chair*

**Herbert Mandel, PE**

GAI Consultants, Inc.

**David Nazare, PE**

Utah Department

of Transportation

*Featured State*

*Representative*

**Gerald Pitzer, PE**

GAI Consultants, Inc.

**Daniel Rehak, PhD**

Carnegie Mellon University

*Student Awards Chair*

**Gary Runco, PE**

Wilbur Smith Associates

**Charles Schubert, PE**

Michael Baker, Jr., Inc.

**Holger Svensson, PE**

Leonhardt, Andra und Partner

**Robert Wellner, PE**

Figg Engineering Group

*Technical Program Chair*

**Lisle E. Williams, PE, PLS**

DMJM+Harris, Inc.

*Attendance Chair*



# CHAIRMAN'S WELCOME

Welcome to Pittsburgh, the "City of Bridges", for the 19<sup>th</sup> annual International Bridge Conference™. We have assembled an outstanding program that should make this year's Conference truly memorable.

The IBC continues to be the preeminent arena for the bridge industry. Primarily sponsored by the Engineers' Society of Western Pennsylvania, the Conference is guided by the Executive Committee — a group of volunteers representing bridge owners, designers, constructors, suppliers, and educators. The Executive Committee, in conjunction with the ESWP Staff has put in many hours of preparation so that you can be assured of a Conference of the highest quality.

We are extremely pleased to be able kick-off this year's Conference by offering you an outstanding lineup of speakers for the Monday morning **Keynote Session**. The **Utah** contingent is excited about the opportunity to showcase their state and its bridges, and we are honored to have them as this year's **Featured State**. Please be sure to visit with them in the **Brigade Room** during the Conference.

The tragic events of September 11, 2001 have made us all much more aware of the security of the transportation infrastructure that we use and work with each day. Let this year's theme — **Vital Links in Securing Our Mobility** — serve as a reminder of the critical role bridge professionals have on this infrastructure. In what is anticipated to be a highlight of this year's Conference, representatives of the **AASHTO Task Force on Transportation Security** will present an update on their activities. Be sure not to miss this important session on Tuesday morning.

We will also have the usual full slate of **Technical Sessions and Seminars** to keep you up-to-date with the latest technology and projects in the world of bridge engineering. We would also like to offer our congratulations to the authors whose papers have been selected for presentation at the Conference, as competition was very keen. Again, **over 100 Exhibitors** will be present to showcase the latest products and services. Take the time to mingle with them and see what they have to offer.

I hope you enjoy your stay and trust you find the Conference an education and enjoyable experience.

Donald W. Herbert, P.E.  
2002 IBC General Chairman



# IBC HISTORICAL PERSPECTIVE

## John A. Roebling Medal Winners

Award for lifetime achievement in bridge engineering

- 2002 Jackson Durkee, C.E., P.E.
- 2001 James E. Roberts, California Department of Transportation
- 2000 Eugene C. Figg, Jr., P.E., Figg Engineering Group
- 1999 Abba G. Lichtenstein, P.E., Dr. Eng.
- 1998 Dr. Man-Chung Tang, P.E., T.Y. Lin International
- 1997 Dr. Christian Menn, Swiss Federal Institute of Technology
- 1996 Frank D. Sears, Modjeski and Masters, Inc.
- 1995 Dr. John W. Fisher, Lehigh University
- 1994 Dr. Jean M. Muller, J. Muller International
- 1993 Arthur L. Elliott, Consultant/Retired from California DOT
- 1992 Frank L. Stahl, Ammann & Whitney
- 1991 Herbert Rothman, Weidlinger Associates
- 1990 T.Y. Lin, T.Y. Lin International
- 1989 Blair Birdsall, Retired/Consultant to New York DOT
- 1988 Carl H. Gronquist, Steinman, Boynton, Gronquist & Birdsall

## George S. Richardson Medal Winners

Award for a single, recent, outstanding achievement

- 2002 The British Columbia Ministry of Transportation for the Lions Gate Bridge, Vancouver, British Columbia
- 2001 Rede Ferroviaria Nacional EP, Portugal for the Tagus River Suspension Bridge Rail Addition Project
- 2000 Ray McCabe, HNTB Corporation for the Storrow Drive Bridge
- 1999 Gerard Sauvageot, J. Muller International for the Confederation Bridge, Northumberland Strait, Canada
- 1998 Honshu Shikoku Bridge Authority for the Akashi-Kaikyo Bridge
- 1997 Virginia DOT, Parsons Brinckerhoff and Tidewater Construction Corp. for the George P. Coleman Bridge, Yorktown, Virginia
- 1996 John M. Kulicki, Modjeski and Masters, Inc. for Development & Approval, LRF Design Specifications
- 1995 Michel P. Virloguex, Designer, Bertrand Deroubaix, Project Manager for the Normandy Bridge
- 1994 Figg Engineering and Eastern Federal Lands Highway Div., FHWA for the Natchez Trace Parkway Bridge, Tennessee
- 1993 Colorado DOT for the Hanging Lake Viaduct, Glenwood Canyon, Colorado
- 1992 Washington State DOT for the Lake Washington Floating Bridge
- 1991 James W. Neal, Jr., John F. Beasley Engineering, Inc. for the Roosevelt Lake Bridge
- 1990 Denny A. McLeod, Rigging International for the Oakland Bay Bridge, California
- 1990 L. Ray Davis, Hardaway Company for the Ben Sawyer Bridge, South Carolina
- 1989 Tsutumu Yamane, Honshu-Shikoku Bridge Authority for the Honshu-Shikoku Bridge Routes, specifically the Kojima-Sakaide Route
- 1988 Jean M. Muller and Eugene C. Figg, Jr., Figg and Muller Engineers, Inc. for the Sunshine Skyway Bridge Across Tampa Bay, Florida



# IBC HISTORICAL PERSPECTIVE

## Gustav Lindenthal Medal Winners

Awarded for a single, recent outstanding achievement demonstrating harmony with the environment, aesthetic merit and successful community participation.

- 2002 Figg Engineers, Linda Figg, for the Broadway Bridge, Daytona Beach, Florida
- 2001 Øresund Fixed Link Bridge Project, Henrik Christensen, for the Øresundskorsortiet, Denmark
- 2000 GGB Highway & Transportation District, Celia Kupersmith for the Golden Gate Bridge
- 1999 Hawaii Dept. of Transportation, Kazu Hayashida for Interstate H-3 Windward Viaduct

## Eugene C. Figg Jr. Medal for Signature Bridges

Awarded for a single recent outstanding achievement in bridge engineering that, through vision and innovation, provides an icon to the community for which it was designed.

- 2002 Jiangsu Provincial Department of Communications for the Jiangyin Bridge, China

# ATTENDEE INFORMATION

## Meeting Information

All IBC functions are located in the Hilton Pittsburgh. Please check individual listings in the program for specific locations and times for all technical sessions, seminars and social functions. Any changes in the program schedule will be posted or announced.



As a courtesy to the Speakers and fellow attendees, the IBC requests that all cell phones and pagers be turned off or switched to silent mode in all Presentation Rooms.

## Registration

The IBC registration area is located in the Kings Garden area of the Hilton Pittsburgh. Registration hours are as follows:

Sunday, June 9	5:30pm - 8:00pm
Monday, June 10	8:00am - 6:00pm
Tuesday, June 11	7:00am - 5:00pm
Wednesday, June 12	7:00am - 1:30pm

## Registration Lists

Registrations received prior to May 31 have been compiled in the IBC PRE-REGISTRATION LIST. This popular service provides attendees with additional networking opportunities.

An addendum to the registration list will be available Wednesday morning. This list reflects those attendees who registered after June 1 or on-site during the conference.

An electronic copy of the entire list is available for \$25 on Wednesday.



# ATTENDEE INFORMATION

## Message Board

As a service to Conference registrants, a Message Board will be located in the Kings Garden area of the Hilton Pittsburgh. The board will be manned by registration staff from 8:00am - 5:00pm on June 10-12. Messages will be retained until the end of each day.

## IBC Exhibition

One of the main attractions of the Conference is the IBC EXPO. As you stroll through over 100 exhibits, you will be able to explore the latest technologies, products and services the bridge industry has to offer.

The IBC EXPO is located in Ballroom 1, the Ballroom Foyer, Kings Garden and our newest area — Sterlings. You will be able to view the exhibits during the following hours:

Monday, June 10	11:00am - 8:00pm
Tuesday, June 11	7:00am - 5:00pm
Wednesday, June 12	7:00am - 1:30pm

## Badge Identification

Please wear your IBC name badge at all times. Not only is the badge your passport to all Conference activities, but it also lists several important local phone numbers on the back. ESWP has authorized monitors on staff to deny access to anyone not wearing the appropriate badge.

## Hotel Information

Hilton Pittsburgh Gateway Center Pittsburgh, PA 15222 Telephone: (412) 391-4600 Business Center fax: (412) 471-4485	Renaissance Pittsburgh 107 Sixth Street Pittsburgh, PA 15222 Telephone: (412) 562-1200 Fax: (412) 562-1644
---	--

## IBC Gift Items

Once again at this year's IBC, you will have the opportunity to purchase IBC T-shirts, Golf Shirts, Sweatshirts, and Golf Hats. These items are high quality and feature the popular IBC logo. The Gift Item Table is located at the Preprint desk where you can make your purchases throughout the Conference up until Wednesday at 2:00pm.

## Pre-prints

Pre-prints for all technical presentations are available at the Pre-Print Booth located in the Ballroom Foyer. Pre-prints can be purchased for just \$2.00 per copy. Also, you can find copies of previous years' IBC Proceedings (for \$55 per volume). The Pre-Print Booth will be open:

Sunday:	5:30pm to 8:00pm
Monday:	8:00am to 6:00pm
Tuesday:	8:00am to 5:00pm
Wednesday:	8:00am to 1:30pm



# ATTENDEE INFORMATION

## Coffee Stand

Looking for some coffee to start your day or a shorter line during the afternoon breaks? Complimentary coffee and breakfast breads are available throughout the Exhibit Hall hours in the **Sterlings area** on the Lobby Level.

## Pittsburgh Recreational Highlights

The **Three Rivers Arts Festival** is an annual Pittsburgh tradition marking the beginning of the summer season. The Festival, which attracts artists from around the country, is a showcase for every imaginable craft in the exhibit booths surrounding the Hilton Pittsburgh, Gateway Center and Point State Park. In addition to the artists market, a wide variety of ethnic foods can be found at the food booths across the street from the main entrance to the Hilton. Live performances of music and dance are scheduled throughout the day and evening. A world of cultural activity is right outside your door.

The **Duquesne Incline**, utilizing two original 1877 cable cars, is a working museum. Visit the Upper Station's display of the Duquesne Incline's history and pictures of other cable and rail cars from around the world. A spectacular view of the "Golden Triangle" can be seen from the Duquesne Incline Observation Deck atop Mt. Washington. Hours of operation are: Monday - Saturday, 5:30am to 12:45am; Sunday, 7:00am to 12:45am.

**Sunday Night IBC Dinner Trolley** to Pittsburgh's fabled "Strip District" Originally a bustling "strip" of land along the Allegheny River where merchants would buy and sell fresh fruits and vegetables, it's grown into one of the regions best areas for dining and nightlife. Everything from sandwiches to jazz to brew pubs are open and waiting for you on Sunday evening. Simply jump on our complimentary trolley service and enjoy some of Pittsburgh's nightlife. Hours are from 5:00pm to 10:00pm — Sunday only.

Please visit the **Greater Pittsburgh Convention & Visitors Bureau information table** located on the 2nd floor Mezzanine Level for more information regarding these attractions and many more.



Sponsored by:  
 Engineers' Society of Western Pennsylvania  
 337 Fourth Avenue, Pittsburgh, PA 15222  
 PHONE: (412) 261-0710 ext. 11 & 12  
 FAX: (412) 261-1606  
 E-MAIL: [conf@eswp.com](mailto:conf@eswp.com)  
 WEB SITE: [www.eswp.com](http://www.eswp.com)

The opinions expressed in this program are not necessarily those of the International Bridge Conference Executive Committee or the Engineers' Society of Western Pennsylvania. Speakers and program content are subject to change.



# SUNDAY

## JUNE 9

11AM - 6PM

EXHIBIT SET-UP

5:30 - 8PM

REGISTRATION / PREPRINT OPEN

5 - 10PM

DINNER TOLLEY STOPS AT HILTON FRONT ENTRANCE

# MONDAY

## JUNE 10

8AM - 6PM

REGISTRATION / PREPRINT OPEN

11AM - 8PM

EXHIBIT HALL OPEN

TECHNICAL SESSIONS

## Keynote Session

Session Chair

Donald W. Herbert, PE  
Pennsylvania DOT, Uniontown, PA

8:30AM-11AM

BALLROOM 2, MEZZANINE

### **The Honorable Bradley L. Mallory**

President of AASHTO for 2002, Secretary of Transportation, Pennsylvania Department of Transportation  
*"Funding America's Future"*

### **Frank Lombardi, PE**

Director of Engineering, Port Authority of New York & New Jersey  
*"The George Washington Bridge: 70 Years of Innovation"*

### **Charles H. Thornton, PhD, PE**

Chairman, The Thornton-Tomasetti-Cutts Group, Inc.  
*"Responding to the World Trade Center Emergency"*

### **The Honorable John Njord, PE**

Executive Director, Utah Department of Transportation  
*"UDOT's Olympic Effort"*

## Bridge Awards Luncheon

11:15AM-12:45PM

BALLROOMS 3 & 4, MEZZANINE

### **George S. Richardson Award**

Accepting: the British Columbia Ministry of Transportation for the Lions Gate Bridge, Vancouver, BC

### **John A. Roebling Award**

Accepting: Jackson Durkee, C.E., P.E.

### **Gustav Lindenthal Award**

Accepting: Linda Figg, Figg Engineers, for the Broadway Bridge, Daytona Beach, FL

### **Eugene C. Figg Jr. Award**

Accepting: Jiangsu Provincial Department of Communications for the Jiangyin Bridge, China

PAGE 7



## Featured State Session: Utah

Session Moderator

Carlos Braceras  
Utah Department of Transportation  
Deputy Executive Director  
Salt Lake City, UT

1PM-5PM

BALLROOM 2, MEZZANINE

1:00pm

### Challenges of the I-15 Reconstruction Project — UDOT's First Design-Build Project

IBC-02-01

Raymond D. Cook, PE, Utah Dept. of Transportation, North Salt Lake, UT

The 17-mile, \$1.59 billion I-15 Reconstruction Project in Salt Lake City, Utah was the largest highway design-build project ever awarded to a single contractor. The project included the design and construction of 142 bridges. This paper presents an overview of the project, UDOT's unique role on the project, how partnering was effectively used to ensure a successful project and the design-builder's solutions to engineering challenges.

1:25pm

### In-Situ Tests of I-15 Bridge and FRP Strengthening of I-80 Bridge

IBC-02-02

Chris P. Pantelides, PhD, University of Utah

The 17-mile, \$1.59 billion I-15 Reconstruction Project in Salt Lake City, Utah provided an opportunity to test two bents, one in the as-is condition and one rehabilitated with Carbon Fiber Reinforced Polymer composites. The experience from these tests was used in the strengthening and rehabilitation of I-80 bridges.

1:50pm

### Emergency Replacement of I-80 Bridge Into Salt Lake International Airport

IBC-02-03

David Nazare, PE, Utah Dept. of Transportation, Salt Lake City, UT

Designed and constructed in the mid 1980's, the I-80 WB ramp into Salt Lake International Airport was a 300 foot single span bridge with a steel girder superstructure on a large radius curve. In September 2000, the Utah Department of Transportation (UDOT) became aware that some of the steel diaphragms were buckling; the bridge was closed



2:15pm

## Hurricane Arch Bridge Rehabilitation

IBC-02-04

Todd B. McMeans and Bradley J. Dillman, Modjeski and Masters, Inc

Constructed circa 1937, the Hurricane Arch Bridge was slated for rehabilitation to increase its roadway width and structural capacity. Sensitivity to the three-hinged steel deck arch's historic nature was key in the development of structural modification details. Fixing of the center arch hinge and a lightweight replacement deck system were essential elements in meeting the rehabilitation goals.

2:40-3:10PM

COFFEE BREAK

3:10pm

## Lateral Pile Load Testing for I-15 Design/Build Project

IBC-02-05

Kyle Rollins, BYU, Civil and Environmental Engineering Department

Lateral seismic forces played a major role in the design of the 140 pile-supported bridges and overpasses involved on the I-15 reconstruction project. To minimize the construction costs and refine the design assumptions, lateral load tests were performed on single pipe piles with several diameters at ten locations along the corridor prior to construction.

3:35pm

## Cherry Hill Bridge Liquefaction and Lateral Spread Evaluation and Mitigation

IBC-02-06

Jon Bischoff, PE, Utah Dept. of Transportation

This case history summarizes the geology, analysis methods, mitigation requirements, and proposed quality control for the Cherry Hill Interchange project in Davis County, Utah.

## Featured State Session: Utah, continued

4:00pm

### **UDOT Bridge Operations**

IBC-02-07

David Eixenberger, PE, Utah Dept. of Transportation, Salt Lake City, UT

This presentation will discuss UDOT's increased emphasis on the "Operational Management" of its bridge system. Discussions will include how Utah's Bridge Division is expanding its operational role beyond routine inspections to also include: asset management, traffic operations, information technologies, emergency planning, and incident management. The operational role of Utah's Bridge Division during the recent 2002 Winter Olympics will be discussed as a case study.

4:25pm

### **George S. Eccles Legacy 2002 Winter Olympics Bridge**

IBC-02-08

Mitchell Balle, PE, and Steve Haines, Parsons Transportation

The George S. Eccles Legacy 2002 Bridge is an innovative cable-stayed bridge at the University of Utah in Salt Lake City, Utah. The type selection process involved many stakeholders. The bridge was designed using state of the art 3-D analysis. The construction sequence simplified cable stressing. The bridge has many unique features.



# Proprietary Session

Session Chair:

Eric Kline  
KTA-Tator, Inc., Pittsburgh, PA

4PM - 6PM

BALLROOMS 3 & 4, MEZZANINE

4:00pm

## Two Weekends In November: The Design, Fabrication and Erection of a Permanent Replacement Bridge

IBC-02-09

Peter Smith, PE, The Fort Miller Co., Inc., Schuylerville, NY and Lisa Grebner, PE, Modern Continental Construction Co., Inc., Cambridge, MA

The Lower Level of the Long Island Expressway Bridge over 58th Street in Queens, NY was replaced in two weekend closures using the Inverset System. This paper shows how this complicated structure was replaced without significantly impacting the 87,000 vehicles using it each day by implementing innovative design, fabrication and construction techniques.

4:20pm

## The Sandwich Plate System for Bridge Decks

IBC-02-10

D.J. Laurie Kennedy, Scott B.D. Alexander, PhD and Roger A. Dorton, PhD, Intelligent Engineering (Canada) Limited, Ottawa, Ontario, Canada

The Sandwich Plate System, comprising two steel flange plates bonded to a continuous elastomer web, much stiffer and stronger than a single steel plate, doesn't need stiffeners and is fatigue insensitive. An SPS deck is designed to replace the orthotropic deck of the stiffening box girder of a suspension bridge.

4:40pm

## FRP Pre-Stressed & Post- Tensioned Bridge Deck System Used in Columbus, Ohio

IBC-02-11

Robert Thompson, Fiber Reinforced Systems, Ltd., Columbus, OH

Bridges in the United States are deteriorating at alarming rates. Corrosion of reinforcing steel in concrete decks has prompted researchers to investigate non-corrosive materials such as Glass Fiber Reinforced Polymers (GFRP) for bridge decks. This paper discusses a unique FRP deck system, which combines pre-stressed concrete and post-tensioning.



Proprietary Session continued

5:00pm

### **Mapping Concrete Deterioration: High-Speed Ground Penetrating Radar Surveys**

IBC-02-12

Francisco A. Romero, GEOVision Geophysical Services, Corona, CA and Roger L. Roberts, Geophysical Survey Systems, Inc., North Salem, NH

Ground-penetrating radar (GPR) has been used for over a decade to identify deterioration in concrete bridge decks with a variety of instruments, antennae and analysis methodologies. An analysis method, using these data to isolate the response from the upper mat of reinforcing steel, has been developed to exploit the advantage of air-coupled antennae for conducting surveys at higher speeds yet accurately locate the deteriorated portions of concrete bridge decks.

5:20pm

### **Windows-Based Computer Analysis of 3-D Sign Bridge Structures**

IBC-02-13

Chung Fu, University of Maryland, College Park, MD

WIN-SABRE runs on Windows platform and includes preprocessor, analysis, and postprocessor modules. The preprocessor includes data entry/editing, mesh generation, and on-screen graphics, among other functions. The analysis module includes automatic load calculation (dead, wind, and ice), stress analysis, and code checking. The analysis is based upon the AASHTO Specifications 4th Edition (2001) to standardize the requirements for sign supports and, as a result, have made easier the design of sign supports.

5:40pm

### **Post Tensioning Modern Technology for Match Cast Joints of Concrete Segmental Bridges**

IBC-02-14

Khalil Doghri and Andrew Micklus, Freyssinet LLC, Chantilly, VA

Corrosion of prestressing steel due to duct discontinuity at match cast joints in segmental bridges has been a major concern, especially in aggressive environments. FREYSSINET developed and recently introduced a product, the FREYSSINET LIASEAL, to address these concerns. This simple and effective device achieves complete duct continuity across match-cast joints.



6:00pm

## New and Unique State of the Art Intumescent Fire Retardant Technology

**IBC-02-67**

Avi Aviner, Phillip Rhodes and Cy Fine, Cote-L Industries, Inc., Teaneck, NJ

Over the past two years there has been a tremendous improvement in the function and effect of intumescent technology by a pioneering company in the field. This technology allows very low load levels of a non-halogenated, time-released phosphate powder to be added to all types of coatings (epoxies, moisture-cured polyurethanes, latex or phenolics.) This results in much thinner coatings with superior performance to all other intumescent coatings on the market and provides for a highly effective passive fire-retardant system.

6PM-8PM

### ATTENDEES COCKTAIL PARTY HOSTED BY THE IBC EXHIBITORS

Be sure to visit the Exhibitors in

- Ballroom 1
- Foyer
- Kings Garden
- Sterlings



## Precast/Prestressed Spliced-Girder Bridges

Chaired by:

Ayaz Malik  
New York State DOT, Albany, New York

4PM-6PM

RIVERS ROOM, MEZZANINE

Precast/Prestressed Spliced-Girder bridges provide additional options, solutions, and alternatives to the bridge industry. Benefits from an owner's perspective will be discussed along with the latest in-depth information related to; fabrication, construction, post-tensioning, analysis, design, and costs of spliced-girder bridges.

### **National Focus**

David A. Tomley, LEAP Software, Inc.

### **Post-Tensioning Applications**

Gary Pueschel, DSI USA, Inc.

### **Fabrication and Production**

Jeff Piper, Tecspan Concrete Structures

### **Analysis and Design Considerations**

Toorak Zokaie, LEAP Software, Inc.

### **Construction Aspects**

Malcolm White, C.J. Mahan Construction Co.



7AM - 5PM
7AM - 5PM
7AM - 8AM

REGISTRATION / PREPRINT OPEN  
 EXHIBIT HALL OPEN  
 CONTINENTAL BREAKFAST IN EXHIBIT HALL

### Design Session, Part 1

Session Chair: Herbert Mandel, PE  
 GAI Consultants, Inc., Monroeville, PA

8AM - 10AM
------------

**BALLROOM 2, MEZZANINE**

**8:00am**

#### **Mingo Creek Viaduct — Challenges of Topography and Geology**

**IBC-02-15**

Thomas G. Leech, PE, Terry L. Downs, PE, and Glenn A. Smith, PE, Gannett Fleming, Inc., Pittsburgh, PA; and Bernie Zielinski, PE, Pennsylvania Turnpike Commission, Harrisburg, PA

This paper discusses the effects of alignment selection based on active mining operations and their effect on foundation selection, the integration of the new structure with the historic railroad trestle, topography effects resulting in the 300' spans and 250' tall piers, and the integration of esthetic principles into the design.

**8:25am**

#### **Easley Bridge Replacement**

**IBC-02-16**

Samuel N. Spear, GAI Consultants, Inc., Monroeville, PA

The Easley Bridge project involved several interesting challenges. Highly variable bedrock, a busy rail yard and city streets, and the urban setting required inventive solutions during design and construction. Drilled caisson foundations, tapered girders, aesthetic pier treatments, and partnering during construction were employed to meet the project requirements.

**8:50am**

#### **LRFD Impacts on the Design of the Hathaway Bridge**

**IBC-02-17**

Lex Collins, HNTB Corporation, Orlando, FL

The new Hathaway Bridge consists of two, precast segmental box girders with seven spans of 330 feet, and 200 foot approach spans. The AASHTO LRFD Code was used for the design. This paper compares the LRFD design to the Standard AASHTO Code and the AASHTO Segmental Bridge Guide Specifications.



### Design Session, Part 1, continued

9:15am

#### **Restoration and Widening of an Historic Truss Bridge**

IBC-02-18

Brian R. Miller, PE, Bergmann Associates, Rochester, NY; Thomas C. Hack, PE, City of Rochester, Rochester, NY; and Richard J. Papaj, PE, New York State Dept. of Transportation, Rochester, NY

The \$8.5 million Ford Street Bridge Rehabilitation project includes historic preservation and restoration along with reconstruction and widening of a truss bridge under staged construction. Constructed in 1918 and located in Rochester, NY, the historic Ford Street Bridge consists of a 390-foot long, 3-span pony-truss and associated 70-foot long approach span.

9:40am

#### **Fort Pitt Boulevard Reconstruction: LRFD Retrofit of Existing Piers**

IBC-02-19

Amy S. Barth, Edward A. Terhune IV, and David C. Tarasovic, SAI Consulting Engineers, Inc., Pittsburgh, PA

Innovative modification of existing concrete-pile-supported piers is vital to reconstruction of the 1900-foot Fort Pitt Boulevard structure. The LRFD design modifies the 34 piers with a new third column and cap beam supported on steel piles, and economically integrates new and existing elements without overloading existing foundations.

10AM-10:30AM

COFFEE BREAK



# Segmental Session

Session Chair:

Gerald Pitzer, PE  
GAI Consultants, Inc., Monroeville, PA

8AM - 10AM	BALLROOMS 3 & 4, MEZZANINE
<b>8:00am</b>	<b>Construction Highlights, Innovative Features, and Valuable Lessons Learned Constructing Precast Concrete Segmental Viaducts of CA/T, I-90/I-93 Project</b> <b>IBC-02-20</b> Firooz Panah, DMJM+HARRIS, Boston, MA <p>At nearly \$100 million, the project consists of over 10,000 ft of multi-level viaduct ramps in a congested site. In addition to discussing construction methods, the paper focuses on several unique and innovative features of the construction, as well as several valuable lessons learned during the past 5 years of construction.</p>
<b>8:25am</b>	<b>Double Decking in the Median for Economic Expansion of Existing Highway</b> <b>IBC-02-21</b> José Rodriguez, PE, Figg Bridge Engineers, Tallahassee, FL <p>Due to limited availability of economically feasible right-of-way, the Tampa-Hillsborough County Expressway Authority is expanding with an elevated structure, designed to be financially and aesthetically attractive. With three reversible lanes, capacity will be significantly increased. Span-by-span erection will be from the top of the newly completed bridge in order to minimize disruption to current traffic flow.</p>
<b>8:50am</b>	<b>Broadway Bridge — Creating Art in the Community’s Vision</b> <b>IBC-02-22</b> Linda Figg, Figg Bridge Engineers, Tallahassee, FL <p>The Orlando Sentinel has called Broadway Bridge “Daytona Beach’s newest permanent art exhibit.” When this unique bridge was dedicated on July 20, 2001 the community realized its dream of a structure that reflected their vision. This presentation will describe how the bridge designers brought the hands-on participation of the community into the design process.</p>



## Segmental Session, continued

9:15am

### **Rafael Mendoza Aviles Bridge — Ecuador**

IBC-02-23

Roupen Donikian, Man-Chung Tang, Rafael Manzanarez and Hohsing Lee, TY Lin International, San Francisco, CA; and R. Nivelá and Otton Lara, Sismica Consultores, Guayaquil, Ecuador

The paper presents the findings of a multi-disciplinary bridge design project, with the dual objective of widening and seismically rehabilitating an existing 1960's vintage, 3-km long, concrete multi-span river crossing in Ecuador. The optimal solution entailed the addition of a parallel segmental concrete bridge and retrofitting the existing bridge.

9:40am

### **Design Recommendations for Seismic Retrofit of Reinforced Concrete Bridge Columns by Advanced Composite Jackets**

IBC-02-24

Ayman E. Salama, Ph.D., PE, CH2M HILL, Santa Ana, CA and Medhat A. Haroun, Ph.D., PE, University of California, Irvine, CA

A proposed design methodology for the seismic retrofit of R/C bridge columns by composite jackets. Design formulae are based on the results of an extensive structural qualification testing program on 32 half-scale columns. Cyclic flexural and shear tests were conducted on typical circular, rectangular, and square column samples. A comparison is made between the existing design methodology, per Caltrans guidelines for the pre-qualification requirements for alternative column casings for seismic retrofit, and the proposed design methodology, in light of the experimentally-observed and the theoretically-predicted performance of the tested samples.

10AM-10:30AM

COFFEE BREAK



Seminars at the International Bridge Conference™ are intensive, four (4) hour, single-topic focused sessions. Each seminar requires an additional fee of \$95. Please see the Registration personnel at the Registration desk to sign up. Seating for each Seminar is limited.

## Mainstream Design: Using LRFD to Design Steel Bridges

Presented by: Dr. Stuart Chen, University of Buffalo  
Dr. Dennis Mertz, University of Delaware

8AM-NOON

RIVERS ROOM, MEZZANINE

A practical seminar intended to familiarize designers with the latest AASHTO LRFD Bridge Design Specifications. Utilizing a typical highway overpass for a sample design, the requirements for steel design will be presented and discussed.

Design issues which had been previously dictated by code and are now left to the designer's judgment will be explored. Rationale will be presented that will enable the designer to evaluate these situations and determine a cost effective solution that meets code requirements.

## Bridge Tour

12:45PM-5PM

MEETS AT HILTON FRONT ENTRANCE

For the past 8 years, this Tuesday Bridge Tour has been a sell-out event at the IBC. Due to popular demand, we are pleased once again to offer the tour of unique Pittsburgh area bridges and ongoing construction projects. The tour will be hosted by the Port Authority of Allegheny County. All ticket holders should be at the front of the Hilton wearing proper footwear, no later than 12:45pm. After 12:45pm, individuals from the waiting list will be placed on the tour. Maximum is 40 people — no exceptions.



## Coatings Part 1

Chaired by:

William L. Shoup  
SSPC, Pittsburgh, PA

8AM-NOON

BENEDUM ROOM, LOBBY LEVEL

### Fireproofing of Steel Bridges

Paul Greigger, PPG  
Art Parker, Hughes Associates

### Features of the New ASTM Standard Practice for Determination of Graffiti Resistance

Renee Bynum, Bayer Corporation

### Fast Cure Polyurea

Gary Gardner, Sherwin Williams

### Containment Platform Load Requirements

Mark Gozion, Containment Design, Inc.

## Innovative Systems for the Repair, Protection, Strengthening and Monitoring in Bridge Design and Construction

Presented by:

David White, PE  
and Jim Chilinski, Sika Corporation  
Graeme Jones, C-Probe Technologies, Ltd.

8AM-NOON

DUQUESNE ROOM, LOBBY LEVEL

This session will highlight the latest innovations for repairing and protecting bridge decks, piers, beams and other structural elements. Material technologies and case studies will be presented on topics including:

- FRP Strengthening
- Post-tensioning Grouts
- Segmental Bridge Construction
- Thin-bonded Polymer Overlays
- Penetrating Corrosion Inhibitors
- Rapid Strength Gain Concrete
- Remote Monitoring Capabilities

Methods and examples of state-of-the-art Remote Monitoring techniques will include corrosion rates, chloride content, P/T strand stress/strain, and structural impact.



# AASHTO TASK FORCE REPORT

## America's Plan to Secure Bridges in The Future

10:30AM-12:30PM

BALLROOM 2, MEZZANINE

The AASHTO Task Force on Land Transportation Security began its work shortly after the attacks on September 11. The Group has selected IBC 2002 as the site for this special Plenary Session report on their mission and progress. Several state bridge engineers will present individual updates and then participate in a panel discussion. Topics will include an update on the formation and mission of the Task Force, it's plan of action, and, to the extent that it can be revealed, it's progress to date.

Prominent members of AASHTO and the Task Force have come to Pittsburgh to present this update. Topics to be addressed during the Session will include: identifying critical bridges, designating the level of security necessary consistent with the criticality of the structure, ways by which structures can be secured in so that both the National Defense and the population are protected or minimally impacted.

### **Introduction**

Gary L. Hoffman, PE, Chief Engineer, PennDOT

### **Summary of Task Force Activity**

Dr. Tony Kane, AASHTO Director for Technical Services

### **Highway Assessment Vulnerability Guide**

Dr. Michael Smith, Senior Scientist/Assistant Vice President, SAIC Corporation

### **Panel Presentation:**

#### **States' Approach to Bridge Security**

Mary Lou Ralls, PE, Texas DOT, State Bridge Engineer

Richard D. Land, PE, CalTrans Deputy Division Chief, Structure Design

James M. O'Connell, PE, NYS DOT, Deputy Chief Engineer, Structures Division

### **Open Discussion:**

#### **Addressing Critical Infrastructure Security**

## Design Session, Part 2

Session Chair:

Carl Angeloff, PE  
Bayer Corporation, Pittsburgh, PA

1:30PM-5PM

**BALLROOM 2, MEZZANINE**

**1:30pm**

### **Three Bridges at I-64/Mercury Boulevard Interchange in Hampton, VA**

**IBC-02-25**

Irfan A. Alvi, PE, Alvi Associates, Inc., Towson, MD

This paper describes three innovative steel bridges recently designed by Alvi Associates for the Virginia DOT. Magruder Boulevard over I-64 features challenging geometry and high-performance steel box girders. I-64 over Mercury Boulevard features high-performance steel and counterweight abutments. Flyover J over Ramp B features fully-integral construction with curved steel girders.

**1:55pm**

### **Illinois Building a Unique Elevated Single Point Urban Diamond Interchange Using Cast-In-Place Post-Tensioned High Performance Concrete Structure**

**IBC-02-26**

Tony F. Shkurti, PhD, Vinod C. Patel, SE, PE, and Hubert Janssen, SE, PE, Teng & Associates, Inc., Chicago, IL

A few elevated Single Point Urban Diamond Interchange (SPUDI) structures have been built in recent years. Illinois is building one using a combination of curved and straight solid box, post-tensioned, High-Performance-Concrete (HPC) girders cast-in-place monolithically with the deck. The intent is to achieve a 75 years projected service life with minimal maintenance. This will be accomplished by using HPC, a latex modified concrete overlay, and by minimizing the amount of tensile stresses in the deck concrete.



2:20pm

**A Comparison of Load Rating Methods for Steel Truss Bridges**

IBC-02-27

Thomas French, Hoyle and Matthew J. Low, PE, Tanner &amp; Associates, Manchester, NH

General Claims have been made that 10% to 20% live load capacity increases can be gained when evaluating stringer bridges using LFD over ASD or LRFD over LFD when the live to dead load ratio is relatively low. This paper compares all three rating methods on two historic truss bridges.

2:45pm

**Design of the Wintergreen Gorge Bridge**

IBC-02-28

Robert W. Bondi, Michael Baker Jr., Inc., Coraopolis, PA

Several bridge types were evaluated to cross the environmentally sensitive Wintergreen Gorge. The 334.0-meter (1095.80 feet) long, Girder Bridge, with a main span of 142.0 meters (465.88 feet), best met the EIS objectives and is currently under construction. This paper describes the preliminary bridge type evaluation process and final design incorporating HPS 485W (70W) steel and LRFD design.

3:10PM-3:45PM

COFFEE BREAK

3:45pm

**Midfield Terminal Curbfront Bridge**

IBC-02-29

Thomas Jenkins and Steven Matty, URS Corporation, Hunt Valley, MD

A double-deck, steel-concrete composite bridge was developed to solve multiple challenges. Steel floorbeam and edge-girder gridworks were erected on falsework between concrete columns. The deck for each level was cast with concrete brackets that frame the gridworks with the columns. Elastomeric bearings and falsework positions minimized column bending moments.



## Design Session, Part 2, continued

4:10pm

### **Seismic Evaluation of the Brooklyn-Queens Expressway Cantilever-Retaining Wall Structures**

IBC-02-30

Steven W. Bennett, Parsons Transportation Group, New York, NY; Serafim G. Arzoumanidis, PE, Parsons, Bridge & Tunnel Division, New York, NY; and Robert A. Dameron, PE, ANATECH Corporation, San Diego, CA, USA

The evaluation included a unique rigid frame retaining wall structure with three large roadway supporting cantilevers. The analysis accounted for the effects of ground motion variation along the height of the wall, the effect of soil retained by the structure, soil-structure interaction and the effect of adjacent structures.

The study concluded that the structure was vulnerable to excessive displacement in a seismic event which would result in unacceptable levels of concrete damage, therefore retrofit with soil anchor tiebacks was recommended to reduce the displacement of the structure.

4:35pm

### **Comparative Study of Effective Flange Width Specifications for Composite Steel Bridges**

IBC-02-31

Stuart S. Chen, Ph.D., PE, M. Chiewanichakorn, I-S Ahn, and Amjad J. Aref, Ph.D., SUNY at Buffalo, Buffalo, NY

Effective slab width provisions for composite steel bridge members are compared via review of AASHTO, British, Japanese, Canadian and EU specifications. The review brings to light several distinct underlying philosophies and numerical comparisons between the various effective width code formulations. Current research that may lead to revised effective width criteria is presented.



# Rehabilitation & Strengthening

Session Chair:

Lisle E. Williams, PE, PLS  
DMJM+Harris Inc., Pittsburgh, PA

1:30PM-5PM

BALLROOM 3 & 4, MEZZANINE

1:30pm

## Retrofit of the Hoan Bridge to Prevent Brittle Fracture

IBC-02-32

Bala Sivakumar, Lichtenstein Consulting Engineers, Paramus, NJ; William Edberg, Ph.D. and Eli Khoury, PE, Lichtenstein Consulting Engineers, New York, NY

On December 13, 2000, two of the three girders of the Hoan Bridge in Milwaukee developed full depth brittle fractures, leaving the span near collapse. Lichtenstein Consulting Engineers, in conjunction with Lehigh University and FHWA, performed a forensic investigation of the failed span. The forensic investigation concluded that the cracking was due to brittle fracture and not related to fatigue. Lichtenstein performed a long-term retrofit design for the Hoan bridge that addressed the identified causes for the sudden brittle fracture and eliminated all fracture-prone details.

1:55pm

## In-Depth Inspection and Investigation of Cable Stays And Post Tensioning of The C&D Canal Bridge

IBC-02-33

Neil A. Shemo, PE, DMJM+Harris, Inc., Philadelphia, PA and Muhammad Chaudhri, PE, Delaware Dept of Transportation, Dover, DE

The SR-1 Bridge crossing the Chesapeake and Delaware Canal near St. Georges, Delaware is a post-tensioned segmental concrete cable stayed bridge. This paper presents the methods utilized and results of the 2001 inspection to investigate the current conditions of the external post tensioning and cable stay systems of this structure.

2:20pm

## “Changing Times” — New Suspenders For the Triborough Bridge

IBC-02-34

James Valenti, PE, Greenman-Pedersen, Inc., Astoria, NY

As part of a \$142 million rehabilitation project, 184 of the 186 original 2 1/8" diameter suspender rope pairs (368 ropes total) supporting the suspension bridge were removed and replaced under live load conditions using multiple methodologies during a 6 month period.



## Rehabilitation & Strengthening continued

2:45pm

### **Market Street Elevated Reconstruction: Project Challenges and Design Solutions**

IBC-02-35

Samuel A. Pickard, PE, DMJM+Harris, Inc., Philadelphia, PA; Emad Krayyem, PE and Jack Tepper, PE SEPTA, Philadelphia, PA

SEPTA has embarked on replacing the 95 year old 9700 foot long double track Market Street Elevated line in Philadelphia with only limited night-time and weekend shutdowns. It includes five elevated stations plus an at grade station outside the city limits. Daily ridership averages over 80,000. The new structure will be a composite steel girder concrete deck structure supported on steel single column bents. The structure will carry a double track direct fixation rail system built using "top-down" construction methods and other innovative construction.

3:10PM-3:45PM

COFFEE BREAK

3:45pm

### **Design and Construction Challenges in Seismic Retrofit of a 2.3 km long Viaduct Structure Crossing an Active Fault in Turkey**

IBC-02-36

Anoop Mokha and Victor A. Zayas, Earthquake Protection Systems, Inc., Richmond, CA; Gian Calvi, Università degli Studi di Pavia, Via Ferrata, Pavia, Italy; and Gaetano Germani, Astaldi S.p.A., Rome, Italy

This paper describes the design challenges encountered in retrofitting the 2.3 km long Trans-European Motorway viaduct that was damaged during the 1999 magnitude 7.2 Duzce Earthquake in Turkey. The existing capacity of the viaduct, level of desired performance, design earthquakes, fault movement and the retrofit scheme utilizing Friction Pendulum seismic isolation will be discussed.



4:10pm

**Nondestructive Evaluation of Pre- and Post-Tensioned Tendons: Void Detection and Corrosion Monitoring**

IBC-02-37

Michael Chajes and Robert Hunsperger, University of Delaware, Newark, DE

Recent inspection of a precast segmental post-tensioned bridge in Florida indicated that voids are a leading cause of corrosion. A novel nondestructive evaluation technique using time domain reflectometry (TDR) to detect, locate, and identify voids and the extent of defects has been developed and demonstrated. Experimental results from both small-scale laboratory tests and field implementation will be reported.

4:35pm

**The Rehabilitation, Survey & Monitoring of the Bear Mountain Bridge Main Cables**

IBC-02-38

Jamey A. Barbas, Parsons Transportation Group, New York, NY and William J. Moreau, PE, New York State Bridge Authority, Highland, NY

The rehabilitation of the Bear Mountain Bridge cables included opening the existing cables for inspection. During the rehabilitation, observations were made which led to further investigation of the structural health of the southwest cable. The paper discusses the observations, survey, monitoring and the recommendation measures that are being implemented.



Seminars at the International Bridge Conference™ are intensive, four (4) hour, single-topic focused sessions. Each seminar requires an additional fee of \$95. Please see the Registration personnel at the Registration desk to sign up. Seating for each Seminar is limited.

## Advanced Composite Materials — Theory, Design and Practice for Use on Bridges

Presented by:

Sarah Cruickshank  
Fyfe Co., LLC, San Diego, CA

1PM-5PM

RIVERS ROOM, MEZZANINE

This seminar begins with an introduction to composite materials, including the wide variety of fibers and matrix materials available. Advantages and disadvantages of different materials are presented in the context of use for bridge rehabilitation. Design aspects of composite materials will be presented, along with specific design examples. Installation, inspection and testing of composite materials will also be presented.



## Coatings Part 2

Chaired by:

William L. Shoup  
SSPC, Pittsburgh, PA

1PM-5PM

BENEDUM ROOM, LOBBY LEVEL

### Electrochemical Impedance Spectroscopy for Evaluating Bridge Coatings

Linda Gray, KTA-Tator, Inc.

### Connecticut Painting Cost Update

L. Brian Castler, Connecticut DOT

### Program Updates

#### National Bridge and Painting Programs

Robert Kogler, FHWA

#### Midwest DOT Maintenance Painting Group

Ted Hopwood, Kentucky Transportation Center

#### New Shop and Field VOC Regulations

Bernie Appleman, KTA-Tator, Inc.

#### SSPC Update

Bill Shoup, SSPC

#### Waterborne Coatings

William Medford, InSpec

## Automated LRFD Cast-In-Place Concrete Post-Tensioned Box Girder Design

Chaired by:

Lee D. Tanase and Toorak Zokaie,  
LEAP Software, Inc.

1PM-5PM

BOARD ROOM, LOBBY LEVEL

For the first time in a public forum, attendees will be exposed to the first and only automated analysis and design for Cast-In-Place Concrete Post-Tensioned Box Girders according to the AASHTO LRFD Specifications. A single span design comparison between the AASHTO Standard and LRFD specifications will provide insight into the similarities and differences between both sets of specifications specific to Cast-In-Place Concrete Post-Tensioned Box Girders.

Key design features include:

- Full-width vs. single web analysis
- Skew effects
- Load distribution
- Loss models

In addition, LEAP Software will showcase a new software product, Conbox, the first dedicated program for the analysis and design of cast-in-place concrete post-tensioned box girders, in both AASHTO Standard and LRFD Specifications.



## 3D Live Loading for AASHTO LRFD Made Easy

Chaired by:

Chris Austin  
Bestech Systems, New York, NY

1PM-5PM

FORBES ROOM, LOBBY LEVEL

Determining the optimum place to locate live loads such that they maximize moment and/or shear at all points of interest on a deck is not easy, as anyone who has tried it will testify. This need not be the case if suitable software is employed.

Bestech Systems have recently announced a 3D Live Load Optimizer as part of SAM (the bridge design program) and they will be showing how fast and easy it is to generate optimum loads for AASHTO LRFD.

During each of two identical sessions a multi-span curved bridge deck will be modeled. A particular longitudinal girder will be selected and all of the relevant influence surfaces will be created. Then all of the optimum load cases will be automatically generated, and the structure will be analyzed. Finally, the envelopes of maximum moment and shear will be used for code checking.

The process takes minutes and is very thorough, in stark contrast to the extensive use of time and engineering judgement which otherwise is required.

The software is available free of capital costs from Bestech Systems on Booth #77.



7AM - 1:30PM

REGISTRATION / PREPRINT OPEN

7AM - 1:30PM

EXHIBIT HALL OPEN

## Construction Session

Session Chair:

Victor Bertolina, PE

SAI Consulting Engineers, Pittsburgh, PA

TECHNICAL SESSIONS

8AM-12:30PM

BALLROOM 2, MEZZANINE

8:00am

### High Tech Wings — The JFK Light Rail Structure

IBC-02-39

Tony Taddeo, Koch Skanska, Carteret, NJ

The primary objective of the technical document is to cogitate on the structural guide way's innovative features, which have played an essential role in the successful realization of the project. Among such features are the Seismic Isolation of the Guideway structure utilizing seismic isolator bearings, the Pre-Cast Segmental Construction Method of the Guideway, the Continuous Welded Direct Fixation Track, the Stray Current Isolation of the Track, and the Elastic Restraining Devices, which were used to mitigate the Rail-Structure Interactive forces.

8:25am

### Demolition of US Grant Suspension Bridge

IBC-02-40

Andreas Felber and David Queen, Buckland & Taylor Ltd., North Vancouver, BC, Canada

The US Grant suspension bridge, across the Ohio River at Portsmouth, Ohio was built in 1927. The bridge superstructure was systematically removed in August 2001 as the first step in making way for a new cable-stayed bridge. This paper describes the bridge, the demolition constraints and the engineering required to safely de-construct the bridge.

8:50am

### The Emergency Reconstruction of Goose Creek Bridge

IBC-02-41

Myrosia Dragan, PE, TAMS Consultants, Inc., New York, NY

Only a single, winter construction season was allowed for reconstruction of the side spans of the Goose Creek Bridge over a tidal waterway. Construction proceeded directly adjacent to the existing bascule span, kept operational. Typical construction time was reduced by use of precast concrete elements and a non-conventional abutment.

PAGE 31



## Construction Session continued

9:15am

**Examination of the Response of Curved and Skewed Steel Bridges During Construction**

IBC-02-42

Daniel Linzell, Elizabeth K. Norton, Bradley J. Bell, and Jeffrey Laman, Penn State University, University Park, PA

Ongoing projects investigating the behavior of curved and skewed steel bridges during construction are summarized. Two projects are discussed, one involving monitoring a single span, skewed steel plate girder bridge during deck placement and a second examining a three-span continuous, moderately curved steel plate girder bridge during steel erection.

9:40am

**Evaluation of Construction Issues and Inconsistent Detailing of Cross-Frame Members in Horizontally Curved Steel I-Girder Bridges**

IBC-02-43

Brandon Chavel and Christopher J. Earls, Ph.D., University of Pittsburgh, Pittsburgh, PA

Construction difficulties in horizontally curved steel I-girder bridges can result from unpredicted displacements and stresses during erection, and from inconsistent detailing of cross-frame members. Results obtained from the finite element modeling of a recently constructed curved I-girder bridge shows that close attention must be given to these construction issues.

10AM-10:30AM

COFFEE BREAK

10:30am

**Construction of US 29 Bridges Over the James River, Lynchburg Virginia**

IBC-02-44

E. Alan Saunders, PE, DMJM+HARRIS, Glen Allen, VA and Danny Torrence, Virginia Department of Transportation, Lynchburg, VA, USA

DMJM+HARRIS's Richmond, Virginia office designed the \$21-million US29 bridges over the James River, Lynchburg, Virginia for the Virginia Department of Transportation (VDOT). The technical presentation focuses on the construction of the 2400' long, 40' wide and 100' high, parallel structures. Key features include grade 50W steel girders, seven-span 1,200' expansion joint units, special seismic connections, and 120 rocksocketed drilled shafts.



10:55am

### **Structural Rehabilitation / Deck Replacement Cross Bronx Expressway / Bruckner Expressway Interchange**

IBC-02-45

Daniel Y. Wan, PE and Jean P. Lum, PE., Hardesty & Hanover, LLP, New York, NY

The project interchange carries a 250,000 daily vehicle traffic and serves as a major link between Interstates I-95, I-278, I-678 and I-295. In 111 spans (80% of total), replacement of the bearings and the concrete deck was performed during four different stages. Staging included building a temporary structure to carry two traffic lanes from westbound I-95 to southbound I-278. The reconstruction work started in July 1999 and was completed and open to traffic in December 2001, approximately 17 months ahead of schedule.

11:20am

### **Overnight Replacement of the I-95 James River Bridge, Richmond, Virginia**

IBC-02-46

Michael Zicko and Robert Lofling, Archer-Western Contractors, Ltd., Richmond, VA

Superstructure replacement of two parallel three-lane bridges occurred during nightly closures between 7:00 pm and 6:00 am. Each evening entire spans were replaced with precast composite units (PCU) spanning from pier to pier. Typical PCU's were 22'-6" wide, 88 feet long and weighed to 150 tons.

11:45am

### **Emergency Bridge Replacement — A Case Study in Cooperative Fast Tracking SEPTA R-5 Fort Washington Bridge**

IBC-02-47

Samuel A. Pickard, PE, DMJM+Harris, Inc., Philadelphia, PA and Edward La Guardia, PE, SEPTA, Philadelphia, PA

Tropical storm Allison caused widespread flooding which resulted in the collapse a two span reinforced concrete arch bridge carrying two main line tracks of SEPTA's R-5 commuter rail line. Within hours of the collapse, preliminary superstructure designs were developed, initiating the fast track design. Preliminary plans were made available to prospective bidders within three days, with final design documents provided two days later. From award of contracts to bridge completion, including track and electric traction systems, took 30 days, for a total of five weeks between disruption and restoration of commuter rail service.

## Innovative Design Session

Session Chair:

Charles Schubert, PE  
Michael Baker Jr., Inc., Coraopolis, PA

8AM-12:30PM

BALLROOM 3 & 4, MEZZANINE

8:00am

### **Aesthetic Opportunities for Extradosed Bridges**

IBC-02-48

Thomas Piotrowski and James Fox, H2L2 Architects / Planners, LLP, New York, NY

The extradosed bridge structure type is the next generation technology. Less than one dozen exist. This presentation will discuss findings relevant to aesthetic opportunities of this structure type with respect to cable arrangements, deck types, shapes of towers and piers, lighting, color, and materials.

8:25am

### **Howell's Mill, West Virginia's Longest Two-Span Continuous Bridge with a Fiber Reinforced Polymer Deck**

IBC-02-49

David Deitz, Palmer Engineering Company, Winchester, KY

When Howells Mill Bridge is completed in the Fall of 2002 it will be the longest bridge in the state with an FRP deck. The steel plate girder bridge consists of two 120-foot continuous spans and will be the first bridge with an FRP deck in West Virginia utilizing a reinforced concrete barrier wall.

8:50am

### **Wichita Riverfront Pedestrian Bridges**

IBC-02-50

David D. Byers, PE, Ph.D., HNTB Corporation, Kansas City, MO and Stoyan Stoyanoff, PhD, Rowan Williams Davies & Irwin Inc., Guelph, Ontario, Canada

As part of Wichita's four-phase riverfront development program, two pedestrian bridges have been designed. The two bridges cross over the Arkansas River and Little Arkansas River with spans of 320 feet and 240 feet respectively.

The focus of this paper will be to present the very unique aspects of pedestrian bridge design including lateral and vertical pedestrian induced excitation, theoretical response assessment and comfort criteria for pedestrian use. Stability and dynamic response of the bridge under strong winds will also be discussed.



9:15am

**Genesis of a Hybrid-Composite Beam**

IBC-02-51

John R. Hillman, PE, SE, Teng & Associates, Inc., Chicago, IL and John W. Gillespie, Jr., Ph.D, University of Delaware, Newark, DE

This paper will address the evolution of a structural member comprised of several building materials, each with unique performance characteristics. The conventional materials are combined in an embodiment of a beam that exploits the inherent benefits of each material in such a manner to optimize the overall structural performance.

9:40am

**Field Monitoring of the Boyer Bridge Fiber Reinforced Polymer Deck Installation**

IBC-02-52

D. Christian Keelor, Christopher J. Earls, Ph.D., Joe Yulimana, and Vivian Luo, University of Pittsburgh, Pittsburgh, PA

The Boyer bridge, in PennDOT District 10-0, has recently received a fiber reinforced polymer (FRP) deck system that the University of Pittsburgh is currently field monitoring. The field monitoring, and subsequent analysis of results, will yield recommendations for the compression flange effective width that should be used when designing FRP deck/steel stringer composite bridges.

10:10-10:30AM

COFFEE BREAK

10:30am

**Innovative Design Concepts and Seismic Design for the Marshall Creek Channel Flume**

IBC-02-53

Hans Strandgaard and Nader Tamannaie, CH2M HILL, Sacramento, CA

Design and construction of a large concrete flume spanning over a wide freeway in a high seismic zone are discussed. Challenges included heavy service loads, supercritical flows, 7.5 MCE, prevention of leakage through concrete and joints, channel flow during construction and an economical and aesthetic design. Construction feedback is included.



	Ballroom 2 (Mezzanine)	Ballrooms 3 & 4 (Mezzanine)	Rivers Room (Mezzanine)	Benedum (Lobby Level)	Boardroom (Lobby Level)	Forbes (Lobby Level)	Duquesne (Lobby Level)
<b>MONDAY</b>							
8:30-11am	Keynote Session						
<b>11:15am - 12:45pm BRIDGE AWARDS LUNCHEON Ballrooms 3 &amp; 4 Ticket Required</b>							
1-5pm	Featured State: Utah						
4-6pm		Proprietary Session	Special Interest: Precast/Prestressed Spliced-Girder Bridges				
<b>6-8pm ATTENDEES COCKTAIL PARTY — HOSTED BY THE IBC EXHIBITORS Exhibit Hall</b>							

	Ballroom 2 (Mezzanine)	Ballrooms 3 & 4 (Mezzanine)	Rivers Room (Mezzanine)	Benedum (Lobby Level)	Boardroom (Lobby Level)	Forbes (Lobby Level)	Duquesne (Lobby Level)
<b>TUESDAY</b>							
<b>7-8am ATTENDEE'S CONTINENTAL BREAKFAST Exhibit Hall</b>							
8am- Noon	Design Session, Part I (ends at 10am)	Segmental Session (ends at 10am)	Seminar: Mainstream Design: Using LRFD to Design Steel Bridges	Special Interest: Coatings (Part I)			
10:30am- 12:30pm	AASHTO Task Force Report						Special Interest: Innovative Systems for Bridge Design and Construction

	Ballroom 2 (Mezzanine)	Ballrooms 3 & 4 (Mezzanine)	Rivers Room (Mezzanine)	Benedum (Lobby Level)	Boardroom (Lobby Level)	Forbes (Lobby Level)	Duquesne (Lobby Level)
<b>TUESDAY</b>							
<b>Noon-1:00pm LUNCH BREAK PITTSBURGH BRIDGE TOUR (departs 12:45pm) Advance Ticket Purchase Required</b>							
1-5pm	Design Session, Part 2 (starts at 1:30pm)	Rehabilitation & Strengthening (starts at 1:30pm)	Seminar: Advanced Composite Materials	Special Interest: Coatings (Part 2)	Special Interest: Automated LRFD for Box Girder Design	Special Interest: 3D Live Loading for AASHTO LRFD	

	Ballroom 2 (Mezzanine)	Ballrooms 3 & 4 (Mezzanine)	Rivers Room (Mezzanine)	Benedum (Lobby Level)	Boardroom (Lobby Level)	Forbes (Lobby Level)	Duquesne (Lobby Level)
<b>WEDNESDAY</b>							
8am- Noon	Construction Session (ends at 12:30pm)	Innovative Design Session (ends at 12:30pm)	Seminar: Wind Engineering for Bridges	Special Interest: FRP Composites for Bridge Construction	Special Interest: Use of Prefabricated Bridge Elements and Systems		Seminar: High Performance Steel Bridges
<b>12:30 - 1:30pm ATTENDEE'S BUFFET LUNCHEON Exhibit Hall</b>							
1:30pm - 3:45pm	Long Span Bridges Session	Movable Session					

## Innovative Design Session, continued

10:55am

**Six Northern State Parkway Bridges**

IBC-02-54

Roxanne Bebee Blatz and Robert H. Smith, Jr., PE, Goodkind & O'Dea, Inc., New York, NY; Michael Geiger, PE, New York State Dept. of Transportation, Hauppauge, NY; and Steven Hubbard, PE, New York State Department of Transportation, Albany, NY

The reconstruction of the Northern State Parkway in Nassau County New York presented challenges in the areas of aesthetics, M&PT, structural design and community relations. The use of innovative concepts, most notably in the bridge design, addressed these concerns on this unique and challenging highway / bridge project.

11:20am

**Conductive Concrete for Bridge Deck Deicing**

IBC-02-55

Sherif Yehia and Christopher Tuan, University of Nebraska, Omaha, NE

Conductive concrete is a cementitious admixture containing electrically conductive components to attain stable and high electrical conductivity. Due to its electrical resistance and impedance, a thin conductive concrete overlay can generate enough heat to prevent ice formation on a bridge deck when connected to a power source.

11:45am

**Deck Replacement for the Skewed Truss Bridge on MD 24 Over Deer Creek in Harford County, Maryland Utilizing a Fiber-Reinforced Polymer (FRP) Deck**

IBC-02-56

Jeffrey Robert, Maryland State Highway Administration, Baltimore, MD; Chung C. Fu, PhD, PE and Hamed Alayed, University of Maryland, College Park, MD

A thorough discussion is presented on Maryland State Highway Administration's first bridge rehabilitation project utilizing a fiber reinforced polymer (FRP) deck. The discussion includes design details, installation procedure, construction methods and in-situ load testing with a wireless monitoring system. Recommendations are also offered on improving the design details based on this experience.



Seminars at the International Bridge Conference™ are intensive, four (4) hour, single-topic focused sessions. Each seminar requires an additional fee of \$95. Please see the Registration personnel at the Registration desk to sign up. Seating for each Seminar is limited.

## Wind Engineering For Bridges

Presented by:

Peter Irwin, Ph.D.  
President, RWDI

8AM-NOON

RIVERS ROOM, MEZZANINE

The seminar will describe the wind issues that are important for large bridges, including wind design criteria, wind statistics, aerodynamic stability, wind loading, wind issues during construction, cable vibrations and wind tunnel testing. The way that each of these issues is addressed will be described beginning with some general background on wind engineering. Aerodynamic instabilities such as vortex excitation, flutter and galloping will be examined and theoretical methods of predicting the bridge dynamic response to turbulence buffeting will be reviewed. Problems and solutions will be illustrated using examples of specific projects.

## High Performance Steel Bridges

Presented by AISI

Moderated by:

Alex Wilson  
Chairman, AISI High Performance Steel Steering  
Committee and Customer Technical Services Manager,  
Bethlehem Steel Corp.

8AM-NOON

DUQUESNE ROOM, MEZZANINE

The Steel Bridge Forum will focus on the design, cost-effectiveness and fabrication of High Performance Steel bridges. This forum will benefit experienced and junior bridge engineers, owners, contractors and educators.

### Cost Comparison of HPS Bridges

Ed Power, P.E., HDR Engineering

### How Can Designers and Owners Take Advantage of HPS Properties?

M. Myint Lwin, P.E., Federal Highway Administration

### Design Issues with HPS

Dr. Richard Sause, P.E., Lehigh University

### Fabrication of HPS-70W Bridges

Scott Kopp, High Steel Structures



## FRP Composites for Bridge Construction — Advances, Installations and Emerging Trends

Chaired by:

John P. Busel  
Executive Director  
Market Development Alliance  
of the FRP Composites Industry  
Harrison, NY

8AM-NOON

**BENEDUM ROOM, LOBBY LEVEL**

This session showcases how FRP composites are no longer the “new kid on the block” in bridge design and installation. Producers and owners will share their practical experiences of recent bridge installations covering design, installation procedures, government collaboration and will present the exciting future that FRP composites technology provides the bridge industry. New bridge construction and rehabilitation using FRP materials have demonstrated many benefits beyond initial cost. Presentations will focus on unique applications, experience in installation techniques, and cost-effective rehabilitation solutions that demonstrate the many advantages of FRP composites. Attendees will gain a fundamental working knowledge about the broad family of FRP composites as well as exposure to detailed application information and case histories.

## Use of Prefabricated Bridge Elements and Systems

Chaired by:

Michael Hyzak, Bridge Designer  
Texas Department of Transportation

8AM-NOON

**BOARD ROOM, LOBBY LEVEL**

Recent innovations in prefabricated bridge elements and systems have helped 1) minimize traffic disruptions during construction; 2) provided constructability solutions; 3) lessened the impact on the environment; and 4) improved safety. In this session, learn about these innovations and find out how the AASHTO Technology Implementation Group (TIG) is promoting and supporting implementation of prefabrication technology.

12:30-1:30PM

**ATTENDEES BUFFET IN THE EXHIBIT HALL  
HOSTED BY THE IBC EXHIBITORS**



# Long Span Bridges Session

Session Chair:

Arthur W. Hedgren, Jr, PhD, PE  
Consultant, Pittsburgh, PA

1:30-3:45PM

BALLROOM 2, MEZZANINE

1:30pm

## Design and Testing of Innovative Cradle System for Cable Stays

IBC-02-57

W. Denney Pate, PE, Figg Bridge Engineers, Tallahassee, FL

A new cradle system allowed for flexibility in the pylon aesthetics of the Maumee River Bridge, the system's initial application. The bridge will have a single 404' pylon; the top 196' faced in back-lit glass. The cradle system has many features, including 40 reference strands to determine the stay conditions in the future.

1:55pm

## A State-of-the-Art Bridge Over the Ohio River: The William Natcher Bridge at Owensboro, KY

IBC-02-58

Vijay Chandra, PE, Parsons Brinckerhoff Inc., New York, NY, Ruchu Hsu, PE, Parsons Brinckerhoff Quade & Douglas, New York, NY, and Steve Goodpastor, PE, Kentucky Transportation Cabinet, Frankfort, KY

Construction of a major steel cable stayed bridge over the Ohio River near the town of Owensboro in Kentucky is almost complete. The bridge has a main span of 1200 feet and accommodates 4 lanes of traffic. This paper deals with the design challenges and construction of the bridge.

2:20pm

## Lehigh River Bridge Load Testing and Instrumentation

IBC-02-59

Thomas Macioce, PE, Pennsylvania Dept of Transportation, Harrisburg, PA; John Tarquinio, PE, URS Corporation; and Robert Connor, Lehigh University, Bethlehem, PA

The Lehigh River Bridge is a 4 span continuous steel deck truss with a total length of 1782 ft. and a main span of 594 ft. To validate design assumptions and verify quality construction of the bridge, several testing and instrumentation requirements were conducted. The basis for performing the testing and instrumentation, costs and benefits will be discussed.



## Long Span Bridges Session continued

2:45pm

### **Engineering the Lions Gate Bridge Suspended Structure Reconstruction**

IBC-02-60

John Clenace and Seth Condell, Parsons - Bridge and Tunnel Division, New York, NY

The Lions' Gate Bridge suspended structure replacement presents the analysis and execution for complete suspended structure replacement of a suspension bridge that maintains full traffic capacity during reconstruction. The analysis was used for the successful direction of erection operations, which also provided verification for the computer models and their application.

3:10pm

### **Reconstruction of Lions Gate Bridge Construction Engineering and Methods**

IBC-02-61

Joseph Tse, John Bryson and Michael J. Abrahams  
Parsons Brinckerhoff Quade & Douglas, New York, NY

This paper discusses the many challenges in developing the deck replacement method and procedures, and the design of the erection equipment. Deck Replacement is to be conducted in segments, typically, during night closures of 8 to 10 hours; traffic is maintained at all other times. This paper also discusses seismic retrofit strategy, which would ensure that the structure could remain open to traffic following a design-level (47-year) event.

3:45PM

CONFERENCE CONCLUDES



# Movable Bridges Session

Session Chair:

Gary Runco, PE  
Wilbur Smith Associates, Pittsburgh, PA

1:30-3:45PM

BALLROOM 3 & 4, MEZZANINE

1:30pm

## Woodrow Wilson Bascule Span

IBC-02-62

Nicholas J. Altebrando, Paul M. Skelton and Robert S. Moses, Hardesty & Hanover, LLP, New York, NY

The new Woodrow Wilson Bascule Bridge in Washington DC will be a 270' trunnion-to-trunnion span 250' in width with eight leaves, 12 traffic lanes and two rail lines. Numerous unique and innovative structural, mechanical and electrical movable bridge engineering solutions that this project required will be presented.

1:55pm

## Unique Aspects of a Signature Bascule Bridge Project

IBC-02-63

David A. Thurnherr, PE, Bergmann Associates, Rochester, NY; Bo Mansouri, PE, Monroe County Dept. of Transportation, Rochester, NY; and Karen M. Brown, PE, New York State Dept. of Transportation, Rochester, NY

The \$64M Colonel Patrick O'Rorke Project includes the construction of a new double-leaf Scherzer rolling lift bascule bridge over the Genesee River in Rochester, NY. The bridge consists of a 74m bascule span flanked by 45m and 280m approach spans. The presentation will focus on unique aspects of the design of this signature structure.

2:20pm

## Fiber Reinforced Polymer Composite Deck Panels on a Vertical Lift Bridge

IBC-02-64

Ravi Mathur, Parsons Transportation Group, San Francisco, CA; Grant Godwin, Martin Marietta Composites, Raleigh, NC; Michael J. Lee, California Dept of Transportation, Sacramento, CA; and Chris Dumlao, Dumlao Consulting, Pleasanton, CA, USA

Caltrans is replacing some panels of open steel grating on Schuyler Heim Bridge with FRP composite panels developed by Martin Marietta Composites. These panels comprise of 4-inch pultruded fiberglass tube cores with top and bottom carbon face sheets. This paper discusses the design of the deck panels for HS25 loading and stringent deflection limits. Also discussed are results from a testing program carried out on the panels.



## Movable Bridges Session continued

**2:45pm**

### **Design Innovations Benefit New Jersey's First Major Bridge Design/Build Project**

**IBC-02-65**

Ernest Hutchins, DMJM+Harris, Iselin, NJ; Ahmad Abdel-Karim and Neil Harris, DMJM+Harris, Sacramento, CA

The 4,385 ft. long Edison Bridge is the first major design/build bridge constructed for the NJDOT. The approach spans of the bridge used precast/pre-stressed concrete spliced girders with integral piers in spans up to 170-ft long. The main river crossing unit is comprised of 9-span, 3-girder steel superstructure.

**3:10pm**

### **Tomlinson Vertical-Lift Bridge**

**IBC-02-66**

Nicholas J. Altebrando, Paul M. Skelton and Robert S. Moses, Hardesty & Hanover, LLP, New York, NY

The new and complex Tomlinson Bridge Lift Span is 2/3 the size of a football field and weighs 6-1/2 million lbs. The bridge carries 4 lanes of highway traffic as well as a single freight rail line over the New Haven Harbor. This presentation will cover the design of the bridge and the use of a temporary lift bridge during construction.

**3:45PM**

**CONFERENCE CONCLUDES**



## ACI / PENNSYLVANIA CONCRETE PROMOTION COUNCIL

BOOTH: 95

Contact: James I. Turici, Jr.  
Phone: 800-942-8078  
Fax: 724-535-3259  
Email: [jturici@cemexusa.com](mailto:jturici@cemexusa.com)

American Concrete Institute: highlights include membership; publications; concrete testing; finishing classes; and certification.

Concrete Promotion Council of Pittsburgh: highlights include current flowable fill; rapid repairs; and underwater placement technologies.

## ACROW CORPORATION

BOOTH: 82

Contact: Eugene Sobecki  
Phone: 201-933-0450  
Fax: 201-933-3461  
Email: [esobecki@acrowusa.com](mailto:esobecki@acrowusa.com)

Acrow is an industry leader in the design and manufacture of prefabricated modular steel bridges. Acrow's principal business is the engineering, manufacturing, and supply of Acrow Panel Bridges. We have been in business for over 50 years. Acrow is based in North America with representation in 35 countries. Visit <http://www.acrowusa.com>

## ACT-MARTCO (ACRYLTECH, INC.)

BOOTH: 9

Contact: Jeffrey S. Dumas  
Phone: 914-592-4010  
Fax: 914-592-3060  
Email: [JSDMathys@aol.com](mailto:JSDMathys@aol.com)

A world leader in the sales and application techniques of water borne acrylic coatings. Featuring surface tolerant coating, Noxyde, which can be applied to most steel surfaces after a simple hand tool cleaning and a 4000 psi pressure wash.

## ADVITAM US

BOOTH: L

Contact: Stanislas Brandt  
Phone: 410-309-3315  
Fax: 410-309-3316  
Email: [sbrandt@advitam-group.com](mailto:sbrandt@advitam-group.com)

Advitam propose to structure owners, managers, or consultants a series of advanced tools and software for management, visual inspection, diagnosis, and monitoring of bridges and structures.



## AMERICAN BRIDGE MANUFACTURING

BOOTH: 23

Contact: Darko R. Jurkovic, PE  
Phone: 412-631-3000  
Fax: 412-631-4000  
Email: [djurkovic@americanbridge.net](mailto:djurkovic@americanbridge.net)

American Bridge Company's Manufacturing Division fabricates the American Grid brand of steel grid bridge deck, miscellaneous structural steel for rail and roadway bridge repair and seismic retrofit, special equipment for the erection of bridges and other structures, the American Precast brand of precast concrete products, and composite steel grid/precast concrete bridge deck panels for nighttime bridge deck replacement.

## AMERICAN GALVANIZERS ASSOCIATION

BOOTH: 33 & 34

Contact: Kimberlie Dunham  
Phone: 720-554-0900  
Fax: 720-554-0909  
Email: [kdunham@galvanizeit.org](mailto:kdunham@galvanizeit.org)

The AGA provides technical information regarding after-fabrication hot-dip galvanizing including specification and design assistance, inspection procedures, performance data, costing statistics and duplex system information.

## AUTOCON COMPOSITES, INC.

BOOTH: K

Contact: John Crimi  
Phone: 416-746-5002  
Fax: 416-743-6383  
Email: [exsen@rogers.com](mailto:exsen@rogers.com)

Manufacturer of a fibre reinforced plastic grid (NEFMAC) which is used as a primary reinforcement for concrete structures in corrosive environments.

## B&B ELECTROMATIC, INC.

BOOTH: H

Contact: David Collier  
Phone: 813-760-0822  
Fax: 813-707-0574  
Email: [decollier@compuserve.com](mailto:decollier@compuserve.com)

B&B Electromatic has been manufacturing transportation safety and traffic control equipment since 1925. We have the largest installed base of vehicular, barrier and pedestrian gates on fixed and movable bridges in the United States. We also offer a comprehensive use of navigation lighting and perimeter security products.



**BAILEY BRIDGES****BOOTH: 93**

Contact: Gene Gilmore  
 Phone: 256-845-7575  
 Fax: 256-845-7775  
 Email: [ggilmore@baileybridge.com](mailto:ggilmore@baileybridge.com)

Bailey bridges are built on-site from a pre-engineered system of ready-to-assemble components. Utilizing standardized pre-fabricated components, Bailey bridges can be built to match a wide range of vehicular bridging applications. Because of their excellent versatility and overall value, thousands of Bailey bridges have been installed throughout the world.

**BAR SPLICE PRODUCTS, INC.****BOOTH: 18**

Contact: Gary R. Foster  
 Phone: 937-427-6460  
 Fax: 937-427-6470

Manufacturer of mechanical splices for rebar.

**BENTLEY SYSTEMS, INCORPORATED****BOOTH: 104**

Contact: Jackie Cissell  
 Phone: 1-800-BENTLEY; 256-536-2822  
 Fax: 256-536-9791  
 Email: [Jackie@geopak.com](mailto:Jackie@geopak.com)

Bentley is a global provider of collaborative software solutions for creating, managing and publishing architectural, engineering and construction (AEC) content. Bentley offers engineering software based on MicroStation®: GEOPAK® Rebar, detailing/scheduling of reinforced concrete, and GEOPAK Bridge, object-oriented 3D bridge design. Bentley also provides a range of professional services. 1-800-BENTLEY. [www.bentley.com](http://www.bentley.com)

**BESTECH SYSTEMS LIMITED****BOOTH: 77**

Contact: Chris Austin  
 Phone: 1-800-347-4171  
 Fax: 212-295-2121  
 Email: [bridges@LRFDsoftware.com](mailto:bridges@LRFDsoftware.com)

SAM is design software for bridges which is unique because it integrates analysis with code checking. The major features for analysis are: finite elements, grillages, line beams and 3d live load optimization. The major features for design are: steel composite & precast girders, reinforced concrete sections and complex section properties.

Bestech Systems  
 Landmark Buildings  
 230 Park Avenue, Suite 864  
 New York, NY 10169

For queries, please call Chris Austin on 212-295-2192

## BETTER ROADS MAGAZINE

BOOTH: 85

Contact: Michael J. Porcaro  
Phone: 847-391-9067  
Fax: 847-391-9058  
Email: mike@betterroads.com

The most authoritative source of information for bridge and highway construction/maintenance, Better Roads serves the government/contractor project team of highway/bridge professionals with 39,000 subscribers, including project owners in federal, state, provincial, county, township/municipal governments, and the contractors and consulting engineers managers who are pre-qualified to perform government project work.

## BRIDGE BUILDER MAGAZINE

BOOTH: 15

Contact: Michael Scheibach  
Phone: 816-254-8735  
Fax: 816-254-2128  
Email: michael@bridgebuildermagazine.com

Bridge Builder serves bridge designers, engineers, and contractors, as well as county, state, and federal departments of transportation. Each issue focuses on new construction, repair, inspection, and maintenance. From small, prefabricated bridges to the largest vehicular bridges on the nation's roadways, the magazine covers the full range of bridge equipment, components, and services.

## BRIDGE DESIGN & ENGINEERING

BOOTH: 69

Contact: Peter Plaistowe  
Phone: 44 20 7973 6666  
Fax: 44 20 7233 5052  
Email: p.plaistowe@hemming-group.co.uk

Bridge design & engineering (Bd&e) is the leading magazine for the international bridge industry. Every issue of Bd&e looks at the latest news, projects reports, interviews and technical & application features from around the world. Bd&e is essential reading for anyone who finances, plans, designs, builds, maintains, operates or owns bridges.

## BRIDGE PRESERVATION, LLC

BOOTH: 6

Contact: Bill Kudrenski  
Phone: 905-560-3646  
Fax: 905-560-8715  
Email: bridgepreserve@aol.com

Manufacturer of liquid cold spray applied bridge deck waterproofing for both railway and highway bridges.



**BURGESS & NIPLE, LTD.****BOOTH: 49**

Contact: Ray Stokes  
 Phone: 614-459-2050  
 Fax: 614-451-1385  
 Email: rstokes@burnip.com

Burgess & Niple's 50 bridge engineers perform new design, rehabilitation, plan review, load rating and inspection. In the last 5 years, we've designed 200 bridges and inspected 3,000 bridges. Our national inspection expertise covers 17 states and 40 bridges with main spans of more than 500 feet.

**CAMPBELL ENGINEERING SUPPORT SERVICES, INC.****BOOTH: 13**

Contact: Nicholas Nazzareno  
 Phone: 800-422-1183  
 Fax: 718-353-4537

Full Service Firm Specializing in access to structures for inspection including UBIU's, MPT, bucket trucks and rigging. Services available 24 hours a day, 7 days a week.

**CAPITAL SERVICES****BOOTH: 4**

Contact: Carla Krzykowski  
 Phone: 518-344-7777  
 Fax: 518-346-1110  
 Email: carlak@capitalservicesny.com

Manufacturer — Expansion joints, elastomerics, waterproofing, concrete repair materials. MetaZeal® systems for bridges, marine & corrosive environments. Also, EVAZOTE, Pro-Flex®, ProCrete™ Easy-1 Injection & Control Joint Systems. Visit our webpage at [www.capitalservicesny.com](http://www.capitalservicesny.com)

**CAROLINA STALITE COMPANY****BOOTH: 66**

Contact: Kenneth S. Harmon, PE  
 Phone: 704-637-1515  
 Fax: 704-642-1572  
 Email: kharmon@stalite.com

Producers of rotary kiln expanded slate aggregate for lightweight structural concrete and geotechnical fill. This low absorption, high performance aggregate has been used in projects across the US, Canada and Europe.

## CHEMCO SYSTEMS

BOOTH: 10

Contact: John Bors  
Phone: 650-261-3790  
Fax: 650-261-3799  
Email: bors@chemcosystems.com

Epoxy Asphalt by ChemCo Systems has a 35-year history as a bridge deck surfacing. Most common applications are: 1) as thin overlays (3/4 to 2 inch thickness) for a lightweight wear course and 2) as a paving surface for orthotropic steel decks where toughness and elastic composite behavior are critical.

## COLLINS ENGINEERING PC

BOOTH: 51

Contact: Eric Thorkildsen  
Phone: 518-479-1430  
Fax: 518-479-1432  
Email: ethorkildsen@collinsengr.com

Civil, Structural, water resources and underwater engineering; planning, design and construction inspection services for transportation, water supply, storm and wastewater collection and treatment, electric power and industrial facilities. Specializing in underwater inspection using engineer-divers for bridges, dams, piers, pipelines, tunnel and water tanks. Hydrographic surveys, structural investigations of bridges, waterfront structures and construction engineering.

## COMPUTERS & STRUCTURES, INC.

BOOTH: 50

Contact: Syed M. Hasanain  
Phone: 510-845-2177  
Fax: 510-845-4096  
Email: info@csiberkeley.com

Software solutions for structural and earthquake engineering — steel and concrete bridges (suspension, cable stayed, and multi-span concrete bridges), buildings, industrial structures, and transmission towers.

## CON/SPAN BRIDGE SYSTEMS

BOOTH: 59

Contact: Timothy J. Beach  
Phone: 937-254-2233  
Fax: 937-254-8365  
Email: tbeach@con-span.com

CON/SPAN Bridge Systems is a patented modular precast system for total set-in place construction of bridges, culverts, underground structures and environmentally acceptable alternatives for underground containment. The arch-box units offer clear spans from 12 ft. to 48 ft. with variable rise. The system includes optional precast wingwalls, headwalls and footings.



## CONCRETE REINFORCING STEEL INSTITUTE (CRSI)

**BOOTH: 60**

Contact: Michael Plei  
 Phone: 847-517-1200  
 Fax: 847-517-1206  
 Email: mplei@crsi.org

CRSI's purpose is to increase the use of reinforced concrete construction through research, education, and promotion. CRSI represents reinforcing steel producers and fabricators, epoxy coating applications and power manufactures, and suppliers of other products used in concrete construction and fabricating equipment manufacturing.

## CONSOLIDATED SYSTEMS

**BOOTH: 35**

Contact: Steve May  
 Phone: 800-624-0925  
 Fax: 901-375-9357

Stay-in-place metal bridge deck.

## CONSTRUCTION TECHNOLOGY LABORATORIES, INC.

**BOOTH: 78**

Contact: Hamid Farzam  
 Phone: 800-522-2285, 217  
 Fax: 847-965-6541  
 Email: hfarzam@CTLGroup.com

Construction Technology Laboratories, Inc., specializes in structural/architectural engineering, consulting, and materials technology. We have extensive experience in inspection, instrumentation, evaluation, testing, and retrofit of all types of bridge structures. We solve structural behavior, construction, and materials problems via laboratory testing and analysis, structural system development, and construction/structural forensic techniques.

## CONTECH CONSTRUCTION PRODUCTS, INC.

**BOOTH: 76**

Contact: [www.contech-cpi.com](http://www.contech-cpi.com)  
 Phone: 800-338-1122  
 Fax: 513-425-5993

CONTECH is the only national producer of metal plate bridge structures; two-lane and pedestrian steel bridges; segmental modular block walls; corrugated steel, aluminum and plastic pipes; and, geosynthetic products for the highway, drainage, sewage and site-improvement markets. Innovative applications for bridges, underpasses, tunnels, conveyor conduits, detention systems, storm drainage, sewage lines, retaining walls and erosion control begin at CONTECH.

## CORRPRO COMPANIES, INC.

BOOTH: 16

Contact: Clem Firlotte, P.E.  
Phone: 330-723-5082  
Fax: 330-722-7606  
Email: cafirlotte@aol.com

Corrpro offers complete cathodic protection and coating services to protect your structures, whether steel or concrete, from corrosion.

## THE D.S. BROWN COMPANY

BOOTH: 80 & 81

Contact: Tom Lewis  
Phone: 952-361-2404  
Fax: 952-361-2444  
Email: tlewis@dsbrown.com

Design and manufacture engineered bridge construction materials including expansion joint systems, structural bearing assemblies (elastomeric, HLMR and spherical) and Cableguard elastomeric wrap (corrosion protection for bridge cables).

## D'APPOLONIA

BOOTH: 29

Contact: Randy O'Rourke  
Phone: 412-856-9440  
Fax: 412-856-9535

Civil, geotechnical and environmental design services for infrastructure systems including foundations, earth retention and excavation support structures, slope stabilization, subsidence mitigation, dewatering, instrumentation and LRFD training.

## DEERY AMERICAN CORPORATION

BOOTH: 73

Contact: Richard Baker  
Phone: 970-260-2774  
Fax: 804-280-9299  
Email: r.baker@deeryamerican.com

Flexible mastic bridge expansion joint systems, mastic deck repair products in black or gray, waterproof membranes.

## DEGUSSA SPECIALTY RESIN SYSTEMS

BOOTH: 37

Contact: Tom Wickett  
Phone: 203-754-8373  
Fax: 203-754-8791  
Email: t.wickett@silikalresins.com

DEGADECK™ methacrylate systems cure to full specification one hour after application, allowing traffic flow to return to normal in a fraction of the time usually required with other repair materials. Cure occurs at temperatures ranging from below freezing to over 100°F. DEGADECK products minimize the potential for traffic-related accidents.



**DMJM+HARRIS, INC.****BOOTH: 38**

Contact: Norma Rowley / Lisle Williams  
 Phone: 412-395-8888  
 Fax: 412-395-8897  
 Email: norma.rowley@dmjmharris.com

DMJM+HARRIS, Inc. is a multi-disciplined consulting firm with a well-established reputation in highways, bridges, mass transit, ports, harbors, airports, energy and intelligent transportation systems.

**DOW CORNING / SSI****BOOTH: 11**

Contact: Frank Chiles P.E.  
 Phone: 918-587-5567  
 Fax: 918-582-7510  
 Email: frankchiles@ssicm.com

X.J.S. Expansion Joint System, a revolutionary new concept in expansion joint construction, combining a polymer nosing and rapid-curing high movement silicone for joint sealing.

**DUNKIRK SPECIALTY STEEL****BOOTH: 47**

Contact: Gary Zaffalon  
 Phone: 716-366-1000  
 Fax: 716-366-0478  
 Email: sales@dunkirksspecialtysteel.com

Dunkirk Specialty Steel produces Stainless & Specialty Steel Bar, Wire, Rod & Rebar Products including: Stainless Steel Rebar - Dowel Bar - Wire (Tie, Strand & Spiral) & Bar (Round, Hexagon, Square & Flat). Stainless Steel Rebar Grades include Types: 316LN, Duplex 2205, 304L, XM-29 (Alloy 240) & XM-19.

**DYWIDAG-SYSTEMS INTERNATIONAL****BOOTH: 1**

Contact: Mark Micici  
 Phone: 973-276-9222  
 Fax: 973-276-9292

DSI will be exhibiting our range of Bar and Multi-Strand Posttensioning Systems together with information on Stay Cables.

**EARTHQUAKE PROTECTION SYSTEMS****BOOTH: 99**

Contact: Dr. Julie Robinson  
 Phone: 510-232-5993  
 Fax: 510-232-6577  
 Email: eps@earthquake-protection.com

Earthquake Protection Systems is one of the world's leading manufacturers of seismic isolation bearings. We offer complete seismic isolation services, including bearing design, structural design support, testing, and installation support. Our highly qualified engineers have the technical expertise to deliver bearings that provide the best seismic performance at the lowest total construction cost.

## E-POXY ENGINEERED MATERIALS, LLC

BOOTH: 68

Contact: Maribeth Taylor  
Phone: 888-999-2463  
Fax: 518-463-3276  
Email: mt@e-poxy.com

E-poxy Engineered Materials, LLC was established in December 2000 in Albany, New York with over 75 years of experience in product design and development. With a mission to provide communities with long lasting structures that are built to best represent the stability, values and blending of cultural history in which they stand, E-poxy Engineered Materials believes that today's roads and bridges span the future growth of our tomorrows. Please contact us at (888) 999-2463 or visit us on-line at [www.e-poxy.com](http://www.e-poxy.com).

## ERIKSSON TECHNOLOGIES, INC.

BOOTH: 54

Contact: Roy Eriksson  
Phone: 813-989-3317  
Fax: 813-989-0617  
Email: info@eriktech.com

Eriksson Technologies develops, markets, and supports bridge design software for the AASHTO LRFD and AASHTO Standard Specifications. Eriksson also offers technical training, engineering consulting services, and technical publications, and is the underwriter and maintainer of LRFD.com.

## EXODERMIC BRIDGE DECK, INC.

BOOTH: 64

Contact: Rob Bettigole  
Phone: 860-435-0300  
Fax: 860-435-4868  
Email: r.bettigole@exodermic.com

An Exodermic™ bridge deck is a lightweight, panelized deck system, comprised of a reinforced concrete slab composite with an unfilled steel grid. Overall depths are typically 6" to 10". This efficient deck design permits significant weight savings compared to a standard reinforced concrete deck while providing the same or better strength/stiffness. The concrete component can be precast or cast-in-place. The modular nature of the deck permits rapid erection, even during very short (overnight) work periods. EBDI is an information source for Exodermic design.

## FIGG ENGINEERING GROUP

BOOTH: 2

Contact: Brad A. Ruffkess  
Phone: 850-224-7400  
Fax: 850-224-5428  
Email: bruffkess@figgbridge.com

Exclusively design and inspect construction of economical signature bridges in harmony with their environment. Specialized in cable-stayed, arches and all types of unique bridges.



**THE FORT MILLER COMPANY, INC.****BOOTH: 44**

Contact: Peter J. Smith  
 Phone: 518-695-5000  
 Fax: 518-695-4970  
 Email: psmith@fmgroup.com

The Fort Miller Co., Inc., a Northeastern United States based precast concrete company, manufactures a broad spectrum of precast concrete products for the transportation industry. This includes such bridge related products as precast concrete box culverts, both three and four sided, bridge deck panels, pier-caps, parapets, piers, segmental box girders, approach slabs, Inverset, and Effideck units. We also manufacture three types of precast concrete retaining walls which may be used for bridge abutments and wingwalls.

**FREESPAN SYSTEMS, INC.****BOOTH: 108**

Contact: F. Michael Swalling  
 Phone: 907-277-3023  
 Fax: 907-274-6002  
 Email: mswalling@swalling.com

FreeSpan Systems, Inc. provides design/build services for construction of ultra long span light duty bridges throughout North America.

**FREYSSINET, LLC****BOOTH: 19**

Contact: Khalil Doghri / Drew Micklus, Jr.  
 Phone: 703-378-2600  
 Fax: 703-378-2700  
 Email: kdoghri@freyssinetusa.com  
 dmicklus@freyssinetusa.com

Freyssinet, a world wide leader in specialty construction techniques, is well known for prestressing and stay cable expertise. Freyssinet Systems are state of the art offering reliable performance, high quality and adaptability for bridges, buildings, storage facilities & floating structures. Freyssinet also provides complete structural repair and upgrading services.

**GENERAL TECHNOLOGIES, INC.****BOOTH: 39**

Contact: Joe Harrison, PE  
 Phone: 281-240-0550  
 Fax: 281-240-0990  
 Email: sales@gti-usa.net

General Technologies, Inc. is a manufacturer of accessories for the concrete industry. We manufacture "GTI Flow Channel" plastic duct, couplers and components for GTI Multi-strand Bonded Systems: Flat duct: 22mm x 38mm, 21mm x 72mm, 25mm x 76mm; Round Duct: 23mm, 59mm, 76mm, 85 mm, 100mm, 115mm & 130mm. GTI-S4 4-.6/.5 strand anchors for flat slabs. Fully Encapsulated Mono-strand Bonded Systems for 0.5 & 0.6" strands. Stressing equipment & accessories. A complete line of plastic composite rebar chairs and continuous slab/beam bolsters.

## GEOTECHNICS, INC.

BOOTH: 22

Contact: Larry Wetzel  
Phone: 412-823-7600  
Fax: 412-823-8999

Geotechnics Inc. is an independent nationally accredited laboratory that has provided geotechnical, geoenvironmental and geosynthetics testing services throughout the United States for over 17 years.

## HARCON CORPORATION

BOOTH: 105

Contact: Harry Stoltzfus  
Phone: 717-687-9294  
Fax: 717-687-9296  
Email: [harry@harconcorp.com](mailto:harry@harconcorp.com)

Harcon Corporation provides special access and for protection services on all types of bridges from single span covered bridges to multi-design structures spanning several miles.

## HARDESTY & HANOVER, LLP

BOOTH: 109

Contact: John G. Zuccerella  
Phone: 212-944-1150  
Fax: 212-391-0297  
Email: [jzuccerella@hardesty-hanover.com](mailto:jzuccerella@hardesty-hanover.com)

Hardesty & Hanover, founded in 1887 by noted designer, Dr. J.A.I. Waddell, is one of the nation's most respected, privately owned consulting engineering firms. With over 115 years of experience in the field of bridge engineering, H&H has been responsible for the planning, designing, and engineering of numerous bridges, highways and expressways throughout the nation.

## HAYES, SEAY, MATTERN & MATTERN, INC.

BOOTH: 52

Contact: Steven J. Chapin  
Phone: 540-857-3201  
Fax: 540-857-3296  
Email: [schapin@hsmm.com](mailto:schapin@hsmm.com)

Hayes, Seay, Mattern & Mattern is a multi-disciplined engineering and architectural firm with over 50 years of experience in providing services to the Transportation Industry. With a staff of over 400, HSMM provides inspection, design, and construction engineering for highway and railroad bridge projects.

## HIGH STEEL STRUCTURES, INC.

BOOTH: 25

Contact: Steven Bussanmas  
Phone: 717-299-5211  
Fax: 717-399-4102  
Email: [sbussanmas@high.net](mailto:sbussanmas@high.net)

High Steel Structures fabricates structural steel for bridges and major building projects, is a steel erector, provides crane rentals and specialized oversized/overweight hauling.



**HILMAN ROLLERS****BOOTH: 32**

Contact: Jim Toy  
 Phone: 732-462-6277  
 Fax: 732-462-6355  
 Email: sales@hilmanrollers.com

Hilman Rollers and rolling systems are used to roll-in bridge spans, trusses, prestressed segments, box girders, and large bridge components weighing up to 1000 tons and more. Hilman rolling systems are designed in launching systems, traveling forms, concrete forming and casting equipment. The ability to perform entire bridge roll-in results in huge savings in time and expenses for many contractors.

**HOUSTON STRUCTURES, INC.****BOOTH: 106**

Contact: Jerry V. Clodfelter  
 Phone: 713-678-7998  
 Fax: 713-678-7610  
 Email: houstl@subiu.net

Houston Structures, Inc. has been responsible for engineering design of cast / forged structural strand sockets, engineering fabrication of specialized materials, and project construction / management.

- Design of cast socket
- Specialized product engineering - castings / forgings
- Tooling / pattern design
- Materials testing / specifications
- Fabrication of cable components
- Construction and erection of cable structures

**INTERLOCKING DECK SYSTEMS  
INTERNATIONAL****BOOTH:  
BLACK DIAMOND**

Contact: Ed Coholich  
 Phone: 412-682-3041  
 Fax: 412-682-3560  
 Email: ecoholich@idsi.org

IDSI is dedicated to the manufacturing and distribution of metal decking systems for new bridge construction and bridge rehabilitation projects. While continuing to offer traditional welded decking projects, IDSI features weldless bridge decking systems that provide advantages over traditional technology. IDSI also provides in-plant precision machining and steel fabrication capabilities.

**IVS HYDRODEMOLITION****BOOTH: 91**

Contact: Joe Romine  
 Phone: 800-448-1917  
 Fax: 912-443-0446  
 Email: joe.romine@ivsgroup.com

Providing the best hydrodemolition operation in the United States for the removal of concrete from bridge decks.

## KTA-TATOR, INC.

BOOTH: 61

Contact: Eric Kline  
Phone: 412-788-1300  
Fax: 412-788-1306  
Email: ekline@kta.com

KTA-Tator, Inc. is a full-service consulting engineering firm specializing in protective coatings, lead paint abatement services, and welding inspection. KTA has extensive experience with dozens of transportation agencies throughout the entire United States. Services include field and shop inspection (surface preparation, coatings application, welding), hazardous paint management services, laboratory testing, failure analysis, expert witness services, training, specification preparation/review, project management, project planning, and support services.

## L B. FOSTER

BOOTH: 71

Contact: David C. Seybert  
Phone: 412 928 3425  
Fax: 412 928 7891  
Email: dseybert@lbfosterco.com

L.B. Foster manufactures, fabricates, and distributes products to serve the nation's surface transportation infrastructure. The company provides a full line of new and used rail, trackwork, and accessories to railroads, mines and industry; it supplies bridge decking, expansion joints, mechanically stabilized earth wall systems, precast concrete products and other products for highway construction and repair; and pipe coatings for natural gas pipelines and utilities.

## LARSA, INC.

BOOTH: 70

Contact: Edward F. Pierson  
Phone: 631-206-3616  
Fax: 631-206-3610  
Email: Epierson@LARSAUSA.com

Integrated linear and nonlinear finite element analysis and design software for structural and earthquake engineering. Analysis from basic linear static to advanced nonlinear progressive collapse. Other advanced analyses include influence line based moving load, restart nonlinear, and time dependent construction analysis with 3-D time dependent effects of concrete creep/shrinkage and prestress tendon losses/relaxation.

## LEAP SOFTWARE, INC.

BOOTH: 65

Contact: Lee Tanase  
Phone: 813-985-9170  
Fax: 813-980-3642  
Email: lee@leapsoft.com

LEAP Software, the nation's leading developer of precast/prestressed concrete bridge design tools, showcases its latest developments in LRFD and metric design software.



**LEHIGH UNIVERSITY —  
ATLSS RESEARCH CENTER****BOOTH: 30**

Contact: Frank E. Stokes  
 Phone: 610-758-5498  
 Fax: 610-158-5553  
 Email: fes2@lehigh.edu

The Lehigh University ATLSS Research Center has extensive experience in laboratory and field instrumentation, testing, and fatigue and strength evaluation of bridges.

**LONG SPAN BRIDGE & CULVERT, LLC****BOOTH: A**

Contact: James Clayton  
 Phone: 240-379-7750  
 Fax: 240-379-7752  
 Email: jclayton@longspanbridge.com

Long Span Bridge & Culvert, LLC specializes in the design, supply and assembly of long-span bridges for engineered applications including: wetlands and stream crossings; overpasses/underpasses; pedestrian walkways; bike paths; railroad grade separations; golf course tunnels; utility protection and underground stormwater detention. Contact us at 1-888-949-LSBC for more information or visit our website at [www.longspanbridge.com](http://www.longspanbridge.com).

**MAB PAINTS & COATINGS****BOOTH: J****MARKET DEVELOPMENT ALLIANCE  
OF THE FRP COMPOSITE INDUSTRY****BOOTH: 96 & 97**

Contact: John P. Busel  
 Phone: 914-381-3572  
 Fax: 914-381-1253  
 Email: jbusel@mdacomposites.org

MDA is a specialized non-profit trade organization representing the FRP composites industry with products for civil engineering applications. Products on display include bridge decks, rebar, fender pile, and concrete repair/strengthening systems. The MDA reference guide on FRP Composite Products for Bridge Applications is available for review by attendees.

**MARTIN MARIETTA COMPOSITES****BOOTH: 90**

Contact: Greg Solomon  
 Phone: 919-788-4367  
 Fax: 919-788-4399  
 Email: greg.solomon@martinmarietta.com

MMC, a subsidiary of Martin Marietta Materials, produces a fiberglass-reinforced polymer highway bridge deck called DuraSpan™. Infrastructure and construction applications are the main focus.

## MCCLAIN & CO., INC.

BOOTH: 55

Contact: Daniel McClain  
Phone: 540-423-1110  
Fax: 540-423-1066  
Email: sales@mcclainandcompany.com

The nation's largest total bridge inspection equipment supplier. Bucket trucks with horizontal reach up to 75', work platforms up to 65'. Safety boats, pontoon boats, manlifts, rail mounted units and certified traffic control. Multiple offices.

## MDX SOFTWARE

BOOTH: 67

Contact: Chris Douty  
Phone: 573-446-3221  
Fax: 573-446-3278  
Email: support@mdxsoftware.com

Developer of curved and straight steel bridge design and rating software based on AASHTO ASD, LFD, and LRFD specifications.

## MICHAEL BAKER JR., INC.

BOOTH: 63

Contact: Jeffrey J. Campbell  
Phone: 412-269-4600  
Fax: 412-269-7915  
Email: jcampbell@mbakercorp.com

Since 1940, Michael Baker Jr., Inc. has provided services to thousands of clients, including numerous state highway and transportation departments, toll authorities, airport authorities and local governments. The Transportation segment of Michael Baker Jr., Inc. specializes in bridge design, bridge inspection/training, software development/training, highway design, airport planning, transit planning, NEPA services, construction management and inspection, and GIS applications.

## MICHAEL LATAS & ASSOCIATES, INC.

BOOTH: C

Contact: Rodney Robinson  
Phone: 314-993-6500  
Fax: 314-993-0632  
Email: RLRobinson@latas.com

Executive search and professional recruiting services. Serving the construction and A/E/P industrial exclusively nationally and internationally since 1975. Your premier source for executive, managerial, and difficult-to-fill professional-level needs.



**MMFX STEEL CORPORATION OF AMERICA****BOOTH: 48**

Contact: Tim Knaus  
 Phone: 704-752-9155  
 Fax: 704-752-9077  
 Email: tim.knaus@mmfxsteel.com

MMFX Steel Corporation of America produces highly corrosion resistant and cost effective steel products that exhibit many superior mechanical properties to that of conventional carbon steel. MMFX currently produces #4 thru #11 reinforcing steel with other products in development or awaiting production. MMFX looks forward to helping rebuild America's infrastructure with longer life cycle materials. Please visit us at [www.mmfxsteel.com](http://www.mmfxsteel.com) to learn more about our cutting edge technology.

**MONOTUBE PILE CORPORATION****BOOTH: 27**

Contact: Scott Udelhoven  
 Phone: 330-454-6111  
 Fax: 330-454-1572  
 Email: monotube@raex.com

End-driven longitudinally fluted steel shell for friction bearing applications available in a variety of diameters and tapers with engineering support for your project needs.

**NATIONAL STEEL BRIDGE ALLIANCE****BOOTH: 26**

Contact: Dale Thomas  
 Phone: 763-591-9099  
 Fax: 769-591-9499  
 Email: thomas@aiscmail.com

The NSBA is a unified industry organization serving those who are interested in enhancing the state-of-the-art of steel bridge design and construction.

**NON-DESTRUCTIVE TESTING GROUP****BOOTH: 56**

Contact: Mike Forbes  
 Phone: 616-891-3570  
 Fax: 616-891-3565  
 Email: ndtg@iserv.net

Non Destructive Testing Group provides Bridge Fabrication inspections for steel and Prestressed Bridges, existing bridge maintenance NDT inspections for evaluations/recomendations and bridge paint inspections.

## NORTHEAST SOLITE CORPORATION

BOOTH: 79

Contact: Barbara Budik  
Phone: 845-246-2646  
Fax: 845-246-3356  
Email: info@nesolite.com

Manufacturer of premium lightweight aggregate for use in new construction, rehabilitation and historic restoration projects. Our expanded shale is inert, durable and consistent in quality and characteristics. Available for pickup or shipment via rail, truck or barge. Offering solutions to architects, engineers and designers worldwide, Northeast Solite® really means "This Rock Works Wonders!"

## NUCOR FASTENER

BOOTH: M

Contact: Jim Witucki  
Phone: 260-337-1627  
Fax: 260-337-1726  
Email: jwitucki@nucor-fastener.com

Nucor Fastener's line of structural fasteners includes grades A325, A325 Type 3, A325-T, A325M, A490 & A490 Type 3 heavy hex bolts. The A325's are offered in several finishes including black (plain), HDG, and MG. Nucor also offers an entire line of F1852 (A325) & A490 Tru-Tension™ assemblies. Standard structural bolts are offered in 1/2" through 1-1/4" diameters up to 10" in length. Nucor's line of Tru-Tension™(TC) assemblies are available in 3/4" through 1-1/8" diameters. We stock structural nuts from 5/8" through 1-1/4". We offer ASTM grades C, C3, DH, DH3 & 2H.

## OLDCASTLE PRECAST, INC.

BOOTH: 42

Contact: Pat Holleran  
Phone: 215-257-8081  
Fax: 215-453-1671  
Email: pat.holleran@oldcastleprecast.com

Precast box culverts, BEBO arch bridges & utility products.

## PALMER ENGINEERING

BOOTH: 53

Contact: Jim Gallt  
Phone: 859-744-1218  
Fax: 859-744-1266  
Email: palmer@palmernet.com

Palmer Engineering has served the public for over thirty years in the areas of highway and bridge design, surveying, land development, and environmental services.



**PAXTON-MITCHELL COMPANY****BOOTH: 21**

Contact: Mark Pfeffer  
 Phone: 402-345-6767  
 Fax: 402-345-6772  
 Email: mpfeffer@paxton-mitchell.com

Manufacturer of the Snooper® Bridge Inspection and Maintenance Crane. Snooper®, the most widely used bridge inspection crane in the world, is capable of under bridge reaches from 30' to 60' and available in basket, platform, or combination configurations.

**PITTSBURGH RIGGING COMPANY****BOOTH: 28**

Contact: Dean R. Peryea  
 Phone: 724-899-3060  
 Fax: 724-899-2676  
 Email: deanp@atc-pa.com

Providing full support and access services for bridge inspection projects for nearly a decade. Offering the finest equipment, highly trained personnel, and excellent safety record. Serving the eastern United States.

**PRECAST / PRESTRESSED  
CONCRETE INSTITUTE (PCI)****BOOTH: 17**

Contact: John S. Dick  
 Phone: 312-360-3205  
 Fax: 312-786-0353  
 Email: j.dick@pcinst.com

A dynamic association devoted to promoting the applications of precast concrete. At the booth, staff is available to discuss issues and answer questions. Free literature is displayed.

**PRESTRESSED CONCRETE ASSOCIATION  
OF PENNSYLVANIA****BOOTH: 14**

Contact: Heinrich O. Bonstedt  
 Phone: 610-395-2338  
 Fax: 610-395-8478  
 Email: hobon@consult-intex.com

The Prestressed Concrete Association of Pennsylvania is a non-profit industry organization of prestressed concrete bridge beam manufacturers approved by the Pennsylvania Department of Transportation as a material source and located in the Commonwealth of Pennsylvania.

## R.J. WATSON, INC.

BOOTH: 40 & 41

Contact: Ron Watson  
Phone: 716-691-3301  
Fax: 716-691-3305  
Email: tron@rjwatson.com

R.J. Watson, Inc. specializes in the design manufacture and testing of high load multirotational bearings, seismic isolation devices, joint sealing systems, waterproofing membranes and high strength fiber composite materials used to strengthen and rehabilitate structural members such as columns, beams, walls, piles, girders and slabs.

## RADCRETE PACIFIC P/L

BOOTH: D

Contact: Adam Everett  
Phone: 61 2 9362 3511  
Fax: 61 2 9362 3244  
Email: sales@radcrete.com.au

Radcrete Pacific is RADCON #7 global distributor — an advanced, bio-chemical liquid which forms continuous permanent sub-surface hydrophilic barriers within concrete sealing existing cracks and long-term shrinkage cracks (to 2.00 mm) as form.

This US invention suits new construction and remedial for LIFETIME waterproofing and protection solutions backed by 26-year track record.

## RAMPART HYDRO SERVICES

BOOTH: I

Contact: Patrick M. Winkler  
Phone: 412-262-4511  
Fax: 412-262-6188

Rampart is the world leader in ultra-high pressure (UHP) hydrodemolition and hydrocleaning. Ultra high pressure, low volume hydrodemolition uses less water; is environmentally friendly; provides a superior bond; and fast and cost effective. Rampart has used Hydrodemolition on bridges surfaces and substructures, dams, tunnels, and parking garages. We look forward to helping you with your demanding projects.

## THE REINFORCED EARTH COMPANY

BOOTH: 19

Contact: Dion Gray  
Phone: 703-821-1175  
Fax: 703-821-1815  
Email: info@reinforcedearth.com

The Reinforced Earth Company (RECo) MSE system is a coherent gravity mass that is engineered to resist the applied loads. Applications include retaining walls, bridge abutments, and structures supporting railway, sea walls and many other applications.



**RESEARCH ENGINEERS INTERNATIONAL****BOOTH: 84**

Contact: Andy Yang  
 Phone: 714-974-2500  
 Fax: 714-974-4771  
 Email: andy@ca.reiusa.com

REI has been a leading worldwide developer of high-quality PC-based engineering software solutions since 1981. The STAAD.Pro family of products is a powerful interoperable suite of structural engineering products and services including:

STAAD.beava, the new bridge analysis and design module, includes capabilities to generate 3D influence surfaces, define curved, straight or custom-defined bridge decks, calculate the number of traffic lane and critical location of UDL, knife and point loads, etc.

**RJD INDUSTRIES, INC.****BOOTH: 74**

Contact: Randall E. Decker  
 Phone: 949-582-0191  
 Fax: 949-582-0995  
 Email: r-decker@pacbell.net

Manufacturer of products that avoid corrosion in concrete: SuperTie, fiberglass formtie systems; SpliceSeal, concrete reinforcement protection system; and FiberDowel, corrosion proof joint restraint system.

**ROADS & BRIDGES MAGAZINE****BOOTH: 36**

Contact: Sabrina M. Garcia  
 Phone: 847-391-1038  
 Fax: 847-390-0408  
 Email: sgarcia@sgcmail.com

As the leading monthly trade publication for the transportation construction market, Roads & Bridges Magazine reaches over 68,000 engineers, contractors, DOT's and other public officials (local, county, state & federal). Our readers design, build and maintain roads, highways, bridges, tunnels and viaducts across the U.S. and Canada.

**ROBERT W. HUNT COMPANY****BOOTH: 43**

Contact: Robert Stachel  
 Phone: 412-921-8833  
 Fax: 412-921-8836  
 Email: east@il.robhunt.com

Founded in 1888, the Robert W. Hunt Co. is an ISO 9000 Registered provider of International Quality Assurance services associated with the fabrication and erection of structural steel, pre-stressed concrete and timber bridges.

## ROCTEST

BOOTH: N

Contact: Pierre Gouvin  
Phone: 877-762-8378  
Fax: 401-633-6021  
Email: pgouvin@roctest.com

World leader in the field of geotechnical and structural instrumentation, Roctest offers a vast range of fiber-optic, vibrating wire and induction-with-frequency output instruments as well as data acquisition systems.

## ROYSTON LABORATORIES DIVISION / CHASE CORPORATION

BOOTH: 12

Contact: John Tortorete  
Phone: 412-828-1500  
Fax: 412-828-4826  
Email: jtortorete@chasecorp.com

Since 1940 Royston Laboratories has been a leader in the development, testing and manufacturing of bridge deck waterproofing systems.

Their product line offers proven solutions to the problems related to bridge deck waterproofing and the limitations of current asphalt mix designs to survive under the weight and flow of today's traffic.

## S.G. PINNEY & ASSOCIATES INSTRUMENT SALES INC. / GREENMAN-PEDERSEN, INC.

BOOTH: 58

Contact: Pat Marazzi  
Phone: 772-337-3080  
Fax: 772-337-0294  
Email: p\_marazzi@sgpinney.com

S.G. Pinney & Associates Instrument Sales, Inc., specializes in corrosion instruments including air monitoring equipment and our new line of Safety, GPS equipment and software. Greenman-Pedersen, Inc. is a top national engineering/architectural design and construction firm involved on major projects throughout the US and overseas since 1966. Provides multi-discipline services to the building, industrial/commercial, transportation, telecommunications, and power/energy industries.

## SALTECH

BOOTH: E

Contact: Don Salzsauler  
Phone: 519-853-0096  
Fax: 519-853-5962  
Email: saltech@interhop.net

Innovators in fiberglass bridge deck fabrication.



**SCOUGAL RUBBER CORP****BOOTH: 5**

Contact: Rob Anderson  
 Phone: 206-763-2650  
 Fax: 206-764-4984  
 Email: roba@scougalrubber.com

Manufacturer of Steel Reinforced Elastomeric Bearings, Plain Elastomeric Bearings, PTFE Slide Bearings, and Vibration Isolators. In business since 1916, we have been supplying to the bridge industry since the 1960's. Our reputation as a quality bearing manufacturer is well known amongst the Transportation departments in fifty states and Canada.

**SEISMIC ENERGY PRODUCTS, L.P.****BOOTH: 83**

Contact: Steve Bowman  
 Phone: 903-675-8571  
 Fax: 903-677-4980  
 Email: steve.bowman@sepbearings.com

Nation's largest manufacturer of seismic isolation bridge bearings, elastomeric bridge bearings, and Fluorogold® Teflon® slide bearings.

**SHERADEN PUBLISHING****BOOTH: B**

Contact: Paul Adomites  
 Phone: 412-331-2206  
 Fax: 412-331-2206  
 Email: padomites@aol.com

"The Bridges of Pittsburgh: Downtown" — a dramatic color poster, photographed by Jack Wolf (see his work in the Ramada Renaissance). Also sets of bridge notecards. Stop by Booth B for a chance to win a unique facsimile edition of the 1928 classic tome — The Bridges of Pittsburgh.

**SHERWIN-WILLIAMS COMPANY****BOOTH: 101**

Contact: Skip Pendry  
 Phone: 803-418-0960  
 Email: sbpendry@sherwin.com

Sherwin-Williams is a world leader in the manufacturing of high performance coatings for the DOT market. From Acrylic to Zinc Rich coating, Epoxies and Urethanes, Sherwin-Williams has product offerings with proven performance and long term histories. The Sherwin-Williams Company booth will feature high performance coatings for new bridge construction, as well as state of the art maintenance products. Information on the Sherwin-Williams Trade Marked "Rapid Deployment" process will be available. Sherwin-Williams Corrosion Engineers and Specification Specialist will be on hand to answer your questions and address your requirements.



## SIKA CORPORATION

BOOTH: 7

Contact: Rosa Romualdo, Marketing Services Manager  
Phone: 201-933-8800  
Fax: 201-933-6225  
Email: romualdo.rosa@sika-corp.com

Sika Corporation is a worldwide leader in the construction industry specializing in systems for concrete repair, protection and structural strengthening. Sika offers products such as carbon and glass fiber fabrics and plates for external reinforcement, epoxies, concrete admixtures, corrosion inhibitors, repair mortars, grouts, sealants, adhesives, coatings, and segmental bridge adhesives.

## SOFIS COMPANY, INC.

BOOTH: 20

Contact: William J. Sofis, Jr.  
Phone: 724-378-2670  
Fax: 724-378-3719  
Email: wsofis@sgi.net

Sofis Co., Inc. has been a DOT prequalified General Contractor for over 41 years. We have earned a reputation for knowledge and respectability specializing in Bridge Repair, Inspection, and Support Services. Supplying top of the line Snoopers, cable rigging, traffic control and all related services, with an exemplary safety record.

## SOLITE CORPORATION

BOOTH: 45

Contact: Doug Clarke  
Phone: 804-673-8635  
Fax: 804-673-0748  
Email: dcsolite@aol.com

Over 55 years of proven durability. Leader in manufacture and promotion of high performance, structural lightweight aggregates. Expanded slate and expanded shale. Notable projects include: Chesapeake Bay Bridge, Annapolis, MD; Hampton Roads Bay Bridge-Tunnel, Hampton, VA; Sebastian Inlet, FL; Whitehurst Freeway, Washington, DC; I-95 James River Bridge, Richmond, VA. Website: [www.solitecorp.com](http://www.solitecorp.com)

## SPECIALTY DIVING

BOOTH: 46

Contact: Liz Kaske  
Phone: 985-542-8770  
Fax: 985-345-7602  
Email: sdila@i-ss.com

Speciality Diving Inc. is a full service marine construction contractor. We are corps of engineer qualified. SDI offers many services that are unique in the diving underwater bridge repair industry. Providing engineer-designed repairs and inspections meeting DOT and FHWA standards. Corps of engineers certified hubzone contractor has performed NDT Level I, II, III inspections for 9 states.



**STAFFORD BANDLOW ENGINEERING INC.****BOOTH: 94**

Contact: Paul Bandlow  
 Phone: 215-340-5830  
 Fax: 215-340-5815  
 Email: SBEngineers@aol.com

Mechanical and electrical engineering services specializing in movable bridge machinery. Providing design, rehabilitation, construction and emergency services. Emphasis on achieving practical solutions to real problems.

**STEADFAST BRIDGES****BOOTH: 92**

Contact: May Toole  
 Phone: 800-749-7515  
 Fax: 256-845-9750  
 Email: mdtoole@steadfastbridge.com

Manufacture of prefabricated steel bridges — Steadfast Pedestrian, Bicycle, Equestrian, Golf Cart & 2 Lane Vehicle Bridges. Prefabricated bridge components for — Emergency, Construction Haul Roads, Detours & Other Applications

**STIRLING LLOYD PRODUCTS, INC.****BOOTH: 03**

Contact: Simon Greensted  
 Phone: 203-230-9448  
 Fax: 203-230-1025  
 Email: slpus@aol.com

The Eliminator® Bridgedeck waterproofing membrane is a sprayed two-coat fast-cure system, providing outstanding waterproofing, adhesion, durability and service life across a wide temperature range.

Eliminator® has an unparalleled record both for highways, utilizing a proprietary tack coat to provide a tenacious bond to asphalt, and for railroads without protection.

**TAMMS INDUSTRIES****BOOTH: 62**

Contact: Stephen Scarpinato  
 Phone: 815-522-3394  
 Fax: 815-522-2323

Tamms Industries is the leading bridge overlay manufacturer/supplier. A complete line of DOT approved patching, sealing and protective coatings products is available.

## TERMARUST TECHNOLOGIES

BOOTH: 89

Contact: Wayne Senick  
Phone: 888-279-5497  
Fax: 514-354-2799  
Email: wsenick@termarust.com

Termarust Technologies manufactures high performance anti-corrosive coatings for steel/metal structures. We warranty our field proven performance. Our innovative technology completely stops crevice corrosion and pack rust in joints and connections on structures. Termarust Technologies provides a cost-effective system for overcoating existing steel/metal structures by minimizing the need to completely remove tightly adhered existing paint and rust.

## TRANSPO INDUSTRIES INC.

BOOTH: 100

Contact: John B. Karlson  
Phone: 914-636-1000  
Fax: 914-636-1282  
Email: jkarlson@transpo.com

Transpo manufactures Polymer Concrete for repairing concrete structures and HMWM for sealing cracked concrete. Our Thin Polymer Concrete Overlay Systems have been used on Concrete, Steel and FRP bridge decks throughout the US. Transpo's Castek Division precasts Polymer Concrete Safety Barrier Panels that are available in Jersey and F shapes, Flat single slope, and custom designs.

## TXI CHAPARRAL STEEL

BOOTH: 102

Contact: David Usry  
Phone: 972-729-1025  
Fax: 972-779-1271  
Email: dusry@txi.com

TXI Chaparral Steel produces a wide range of WFB sections along with H-Pile, Sheet Pile and Bar Products at facilities located in Midlothian, Texas and Petersburg, Virginia.

## UNITED STATES STEEL CORPORATION

BOOTH: 8

Contact: Mance Parks  
Phone: 219-888-1822  
Fax: 219-888-2241  
Email: mhparks@uss.com

Products include the manufacture and sale of Carbon High-Strength Low-Alloy, Alloy Armor, and Strip Mill Plate Products.



**VECTOR CORROSION TECHNOLOGIES****BOOTH: 98**

Contact: Sean Abbott  
 Phone: 204-489-6300  
 Fax: 204-489-6033  
 Email: seana@vector-corrosion.com

Vector Corrosion Technologies specializes in products and services for extending the life of concrete structures experiencing corrosion of the reinforcing steel. Vector's expertise includes corrosion investigation, and design and installation of corrosion mitigation systems such as embedded galvanic anodes, electrochemical chloride extraction, and both galvanic and impressed-current cathodic protection.

**VERMONT FASTENERS MANUFACTURING****BOOTH: 103**

Contact: Peter Kasper  
 Phone: 802-863-3663  
 Fax: 802-868-2089  
 Email: kasper@vfm.com

Vermont Fasteners Manufacturing produces fully certified domestic structural fasteners out of steel that is melted and manufactured in the USA. VFM's fasteners meet the most demanding applications including bridge construction. Products produced include A325 Type 1, in plain, mechanical and hot dip galvanized finishes, Type 3 weathering steel, A325 Tension Control Bolts and A490 structural bolts.

**W.R. GRACE & CO.****BOOTH: 57****WATSON BOWMAN ACME CORP.****BOOTH: 75**

Contact: Virginia Foreman  
 Phone: 716-691-7566  
 Fax: 716-564-0361  
 Email: virginia.foreman@wbacorp.com

Watson Bowman Acme has been an industry leader in expansion control for more than 50 years. The Wabo® name has earned its reputation for quality, innovation and cutting edge technology. Watson Bowman Acme provides and manufactures a variety of engineered solutions for expansion control, concrete repair and protection and composite strengthening systems. Visit us on the web at [www.wbacorp.com](http://www.wbacorp.com) or call 1-800-677-4WBA.

**WESTFALL COMPANY, INC.****BOOTH: 24**

Contact: Garland R. Westfall  
 Phone: 636-343-5855  
 Fax: 636-343-6956  
 Email: westfallsales@msn.com

Fiberglass drain systems and other corrosion resistant products for elevated highways, bridge approaches and bridges. Come see new solutions for age-old problems. Website: [www.westfallcompany.com/bridgedrain.html](http://www.westfallcompany.com/bridgedrain.html).



## WHEELING CORRUGATING COMPANY

BOOTH: 72

Contact: Mike Benson  
Phone: 304-234-2326  
Fax: 304-234-2378  
Email: [bensonmw@wpsc.com](mailto:bensonmw@wpsc.com)

Wheeling Corrugating Company specializes in permanent metal bridge deck forms. Form depths range from 2 inches through 4.5 inches accommodating girder spacings up to 15'-0".

## WILLIAMS FORM ENGINEERING CORP.

BOOTH: 31

Contact: Ryan Williams  
Phone: 616-365-9220  
Fax: 616-365-2668  
Email: [ryan@williamsform.com](mailto:ryan@williamsform.com)

Williams Form Engineering is one of the world's leading manufacturers of high capacity anchorage systems. Our products include bonded and mechanical rock and soil anchors utilizing steel All-Thread and hollow bars, (steel grades as high as 150 KSI) with ultimate strengths as high as 778,000 lbs. These systems are often used for slope stability, tiebacks, tunnel bolting and foundation repair. Williams also manufactures high capacity concrete anchors including mechanical, chemical and cast-in place systems. In addition to our anchoring product line, Williams also supplies pot-tensioning systems and has been manufacturing and supplying concrete forming hardware throughout the world for the past 70 years.

## WILLIAMSPORT WIREROPE WORKS

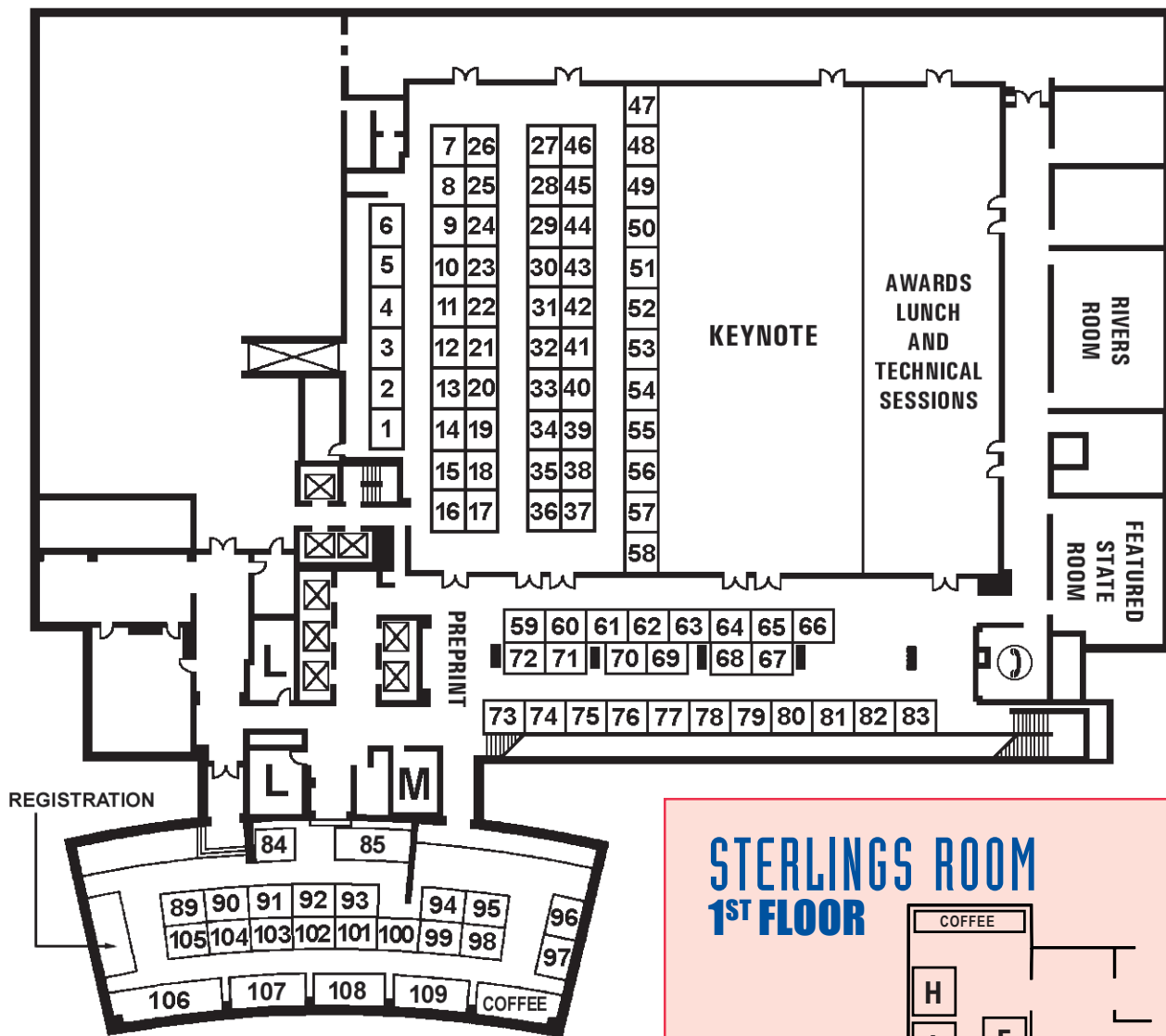
BOOTH: 107

Contact: Claude Caroway  
Phone: 570-326-5146  
Fax: 570-327-4274  
Email: [ccaroway@wwwrope.com](mailto:ccaroway@wwwrope.com)

WilliamSPORT Wirerope Works, Inc. (WWW) manufactures wire rope and strand products under the name Bethlehem Wire Rope®. The Bethlehem brand represents the most complete facilities and experienced personnel in the US, particularly in the fabrication of structural strand and wire rope assemblies, and has long been recognized world wide for superior quality and craftsmanship.



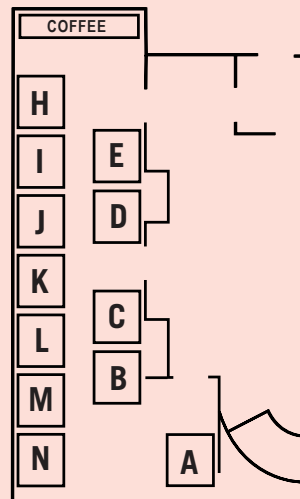
# 2002 EXHIBIT HALL MEZZANINE



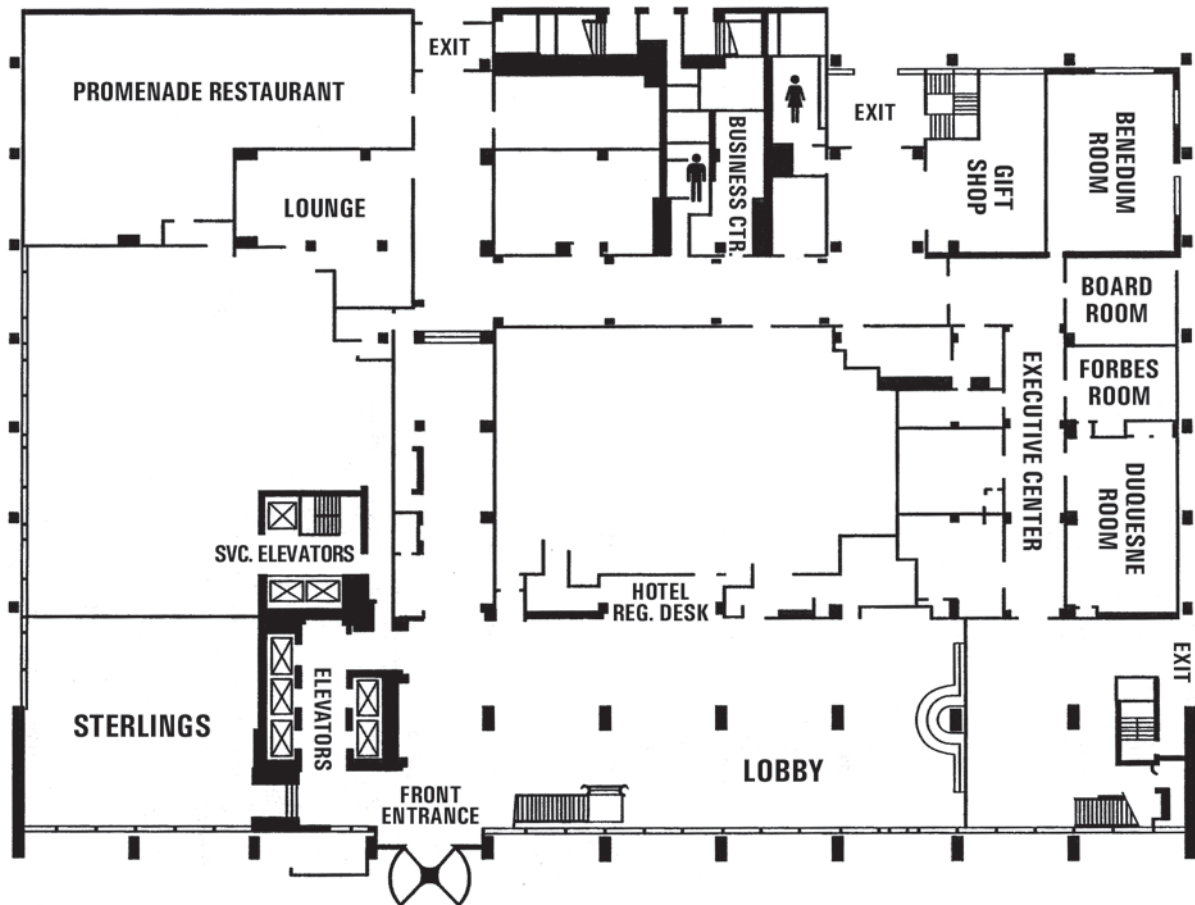
As a courtesy to the Speakers and fellow attendees, the IBC requests that all cell phones and pagers be turned off or switched to silent mode in all Presentation Rooms.

Please wear your IBC name badge at all times. Not only is the badge your passport to all conferences activities, but it also lists several important local phone numbers on the back.

## STERLINGS ROOM 1ST FLOOR



# PITTSBURGH HILTON LOBBY LEVEL



INTERNATIONAL  
BRIDGE CONFERENCE™

## 2002 IBC CO-SPONSORS

The Engineers' Society of Western Pennsylvania gratefully acknowledges our Co-Sponsors for their support and promotion of the International Bridge Conference™.

American Association of State Highway and Transportation Officials (AASHTO)

American Segmental Bridge Institute

British Constructional Steelwork Association Ltd.

Market Development Alliance of the FRP Composites Industry

National Steel Bridge Alliance (NSBA)

Prestressed Concrete Association of Pennsylvania (PCAP)

SSPC: The Society for Protective Coatings

Structural Engineering Institute of the American Society of Civil Engineers

Structural Engineers' Association of Arizona